



Berowra

Public School

The Crest

Wednesday 29th October 2014
Term 4 Week 4

Phone 9456 1319

website - <http://www.berowra-p.schools.nsw.edu.au>

World Teachers' Day

Friday 31st October is World Teachers' Day – so if you are reading this – please thank a teacher!

World Teachers' Day was inaugurated on October 5, 1994 by the United Nations Education, Scientific and Cultural Organisation (UNESCO) to commemorate the 1966 joint signing of the UNESCO/ILO (International Labour Organisation) Recommendation concerning the status of teachers.

As an educational leader, I wish to thank the teaching staff of Berowra Public School, for their continued professionalism and dedication to their students. Thank you teachers you truly make a difference in our childrens' lives.



Kindergarten Orientation Program

The Kindergarten Orientation Program, Berowra Beginners, is drawing to a close and I sincerely thank teachers, buddies, parents and our new Kindergarten students for their successful contributions. The teachers and I have enjoyed meeting our 2015 students and never cease to be impressed by the confidence, joy and enthusiasm they all display. Tomorrow, 30th October, will be the final day of the program. Parents and 2015 students are invited to the school hall for our Kindergarten Orientation on Thursday, 13th November at 10:00am.

Planning 2015

The 2015 planning process has now begun. Please let the school know as soon as possible if your child will be enrolling in a new school for next year (except Year 6). Likewise, if your child will be taking an extended summer vacation and returning to Berowra after 28th January 2015, you will need to complete an exemption form. These can be obtained from the office.

WOW Day

We would like everyone to wear something orange on Wednesday November 12th for **WOW DAY**..... Wear school uniform and just add something orange to it eg socks, ribbons, hat.

"**Wear Orange Wednesday.**" This is a national campaign in recognition of the efforts of thousands of SES volunteers who give up their time to serve their community.

NO DONATION REQUIRED.

Bike Safety

Your child must wear a helmet when riding a bike in any public place - it is the law.

Your child's helmet must comply with the Australia and New Zealand Standards. It must be securely fitted and fastened on their head.

Check that your child wears a bicycle helmet whenever playing or riding on wheels - bikes, foot scooters, roller skates, skateboards or rollerblades. The helmet should be firmly buckled so it fits without wobbling or slipping to the sides. It must protect the forehead.

Although children quickly learn to pedal, steer and brake, they are not ready to cycle near traffic or on the road.

Children under 12 and adult riders accompanying and supervising them may ride on the footpath, unless there are signs specifically prohibiting cycling.

When riding on the footpath, cyclists must keep to the left and give way to pedestrians, children need to take special care at driveways where vehicles may be driving in or out. At intersections, children must dismount and wheel the bicycle across the road as a pedestrian, following the 'STOP ! LOOK ! LISTEN ! THINK !' procedure.

Children must dismount and walk bicycles into the school grounds and secure them to the bike racks.

Di Bower

Principal

MATHS FUN DAY -

Maths Fun Day was lots of fun! Feedback about the day has been very positive, as our students and staff enjoyed the hands-on discovery approach to learning in buddy groups. The Berowra teachers' organised a variety of interesting activities, including all sorts of measuring, graphing, strategic games, problem solving, tessellation design, tangrams, 2D and 3D shapes and more. The study of mathematics provides opportunities for students to appreciate mathematical reasoning and to apply mathematical understanding creatively and efficiently. The Maths Fun Day enabled our students to enjoy maths and become self-motivated learners through inquiry and active participation in challenging and engaging experiences. Many thanks to all involved.

Kind regards,
Glenn Pritchard
BPS Mathematics Co-ordinator



LIVE OUTSIDE THE BOX CHALLENGE

Stages 2 and 3 will be undertaking the Live Outside the Box Challenge for the next two weeks. Students have taken home their passports and will require their parents and caregivers to sign their results at the end of each day. The challenge encourages eating healthy meals and being active whilst discouraging foods high in fats and sugar.

Taran Jones

SPORT NEWS - Our four PSSA sporting teams have been playing really well over the past few weeks. Both Junior and Senior Cricket showed great sportsmanship while narrowly losing against Hornsby Heights PS last week. The T-ball and Softball teams both enjoyed wins.

CANTEEN - Please find our new summer menu included. Pita Pockets are new and Nachos is back. Salad is always popular as well as the old favourites.

Canteen Roster

<i>Fri 31/10</i>	T Pearce
<i>Wed 5/11</i>	D Allen, P Smith
<i>Thurs 6/11</i>	J Ludlow, C Harriss
<i>Fri 7/11</i>	T White, V Eliasson
<i>Wed 12/11</i>	L Plumridge, R Baker
<i>Thurs 13/11</i>	K Carter, C Stone
<i>Fri 14/11</i>	C Jones

It is a concern that many children are bringing large amounts of money to school to spend at the canteen, for example \$20 or \$50.

This is a lot of money for young children to spend or lose as well as a concern for the amount of food they may buy. Pre-ordered lunches are preferred with maybe only a small amount of money to spend over the counter.

UNIFORM SHOP - Roster

<i>Mon 3/11</i>	S Manns, L Plumridge
-----------------	----------------------

<i>Thurs 6/11</i>	N Steele, C Harris
-------------------	--------------------

I just thought I would share this photo of some of the girls at the Energy Express Eisteddford, held last weekend. The girls came 1st and dance amazingly. They scored 89 points for the dance and I do believe the extra school dancing has really helped.

Thank you.

Tammy Allen



ENROL NOW FOR KINDERGARTEN 2015

Enrolments for Kindergarten are well underway.

If your child or you know of a child ready to start school next year make sure they are enrolled.

Our orientation programs began this term with the Kindy Fun Day.

Berowra Beginners Program commenced Week 2 Term 4 and Orientation Day 13th November.

For more information contact the school office on 9456 1319.



Diary Dates

October

Thurs 30	League Tag Gala Day Pink Morning Tea
----------	---

November

Sat 8	BPS Fair
10-12	Year 3 Gibberagong camp
Thurs 13	Kindy 2015 Orientation Day
Fri 14	BPS Disco
17-19	Year 4 Gibberagong camp
17-21	Stage 3 Broken Bay camp
Thurs 20	Stage 2 Water Catchment program
Tues 25	Science Show
Wed 26	Kindy Teddy Bears Picnic at Gibberagong P&C AGM 7pm in staffroom
Thurs 27	Twilight Concert & sausage sizzle 6pm

December

Wed 3	Christmas church service BPS Helpers morning Tea Y7 2015 High School Orientation Day
Tues 9	K-2 Christmas Concert 10am & 12pm
Thurs 11	BPS Presentation Day
Mon 15	Celebration of Learning Assembly Year 6 Farewell
Wed 17	Last day of term
18-19	Staff Development Days
Jan 28	Students return for 2015

Berowra Public School Fair Saturday 8th November

Ride armbands are now on sale. They are only \$25 for unlimited rides from 11am till 3pm (\$30 if buying on the day) and are available at the Uniform Shop Thursday afternoon, at BOOSH Cottage any morning or afternoon and outside Coles Supermarket on Saturday 1st November 10am-2pm or contact Lisa on 0413 367 580

Please return **ALL raffle ticket books**, sold or unsold **AS SOON AS POSSIBLE.**

MONEY COLLECTION DAYS

Please note that money collection days at Berowra Public School are **Tuesdays** and **Thursdays only**.

For security of payments it would be appreciated if money only be sent to school on these days in a signed payment envelope.

We have only two days a week allocated to receipt money so please remind your child to give it to their teacher in the morning as receipting and banking are completed during the day. Correct money is appreciated as the office is unable to hold change.

Please do not hand payments in after school. Handing money into the office may result in confusion and your child's name not being marked off as paid for sport, excursions and activities.

Any payments for the choir, drama, interschool sport or extra curricular activities as well as P&C or Support Group fundraisers and the canteen special lunch days can also be handed to the class teacher, but please include these in separate envelopes and with separate payment.



Thank you for your cooperation.

Class Awards 15 Sept - 10 Oct

KB	Isabel N, Locke T
KP	Max M, Oliver M, Farrah P, Alex L, Oliver M, Dorian T, Leon J, Alex L, Dominic H, Gabe H
1A	Emily C, Nicole J
1C	Zoe D, Jackson C,
1S	Avari D, Robert W
2P	Brinlee S, Grace H, Maximus V, Rachel D, Daniel L, Anthony D, Kian S, Marcus G,
2R	Drew S, Genevieve C
3P	Bodie D, Emma H, Fiona T
4G	Isara W, Zac B, William P
4P	Mirabel J, Cody L, Daniel H, Polly V, Nene H
5W	Abbey T, Hayley T, Stephanie M
5/6J	Jessica L, Byron C, Kyle L

Pink Ribbon Morning Tea



Thursday 30th October
9.30am at BOOSH Cottage



Bring a friend, bring a donation,
wear something pink and
come enjoy a tea or coffee, cake and a chat.

Lucky door and raffle prizes to be won.
Preschoolers welcome.

See you there!!

NOTES YOU MAY HAVE MISSED

Sent Out	Subject	Distribution	Response before
3/9	Summer Sport	Yr 3—Yr 6	9/10
10/9	PSSA sport	PSSA reps	9/10
15/10	Beginner Recorder	Kindy & Year 1	1/12
17/9	Gibberagong camp	Year 3 & 4	23/10
16/10	Broken Bay camp Consent and medical form	Year 5 & 6	24/10
22/10	K-2 Christmas Concert donation	K—2	ASAP
22/10	The Surfing Scientist	K—6	13/11
29/10	BPS Disco	K—6	13/11

**Most notes are on the BPS website under
'Our School' tab—'Missed a Note?'**

Beginner Recorder Ensemble 2015

Registrations are now open for the beginner recorder classes for 2015. Sign up now to reserve a place for your child.

For more details please refer to the note available from the school office or contact me at sue.thorv@gmail.com



Please register by 1st December, 2014.

Sue Thorvaldson

Recorder Ensemble Director

BPS String Ensemble 2015

The BPS String Ensemble is looking for new members for 2015.

Students who are learning violin, viola, cello or double bass are encouraged to join us.

In 2015 the string ensemble will cater for players from beginners to more advanced students. A highlight for 2015 will be the chance to play on the stage of the Sydney Opera House in The Festival of Instrumental Music.

For more details or to register please contact me at sue.thorv@gmail.com. Please register by 1st December, 2014 if you wish your child to be involved in the Festival of Instrumental Music.

Sue Thorvaldson

BPS String Ensemble Director



Berowra

Public School

FAIR



Saturday 8th November

ATTRACTIONS INCLUDE:

- Dodgem Cars
- Ferris Wheel
- Super Slide
- Side Show Alley
- KindiFarm
- Pancakes
- Sausage Sizzle
- Hot Dogs
- Gozleme
- Slushies
- Chocolate Wheel
- Market Stalls
- Show Bags & lollies
- Plant Stalls
- 2nd Hand Books
- 2nd hand clothes
- Café & Cake Stall
- Trash and Treasure
- Rides, Rides and Rides
- Entertainment
- Silent Auction
- Mounted Police
- Fire Brigade
- Ice Cream Palour
- And lots, lots, more...

10^{am} - 4^{pm}

Rides from
10^{am} - 4^{pm}
Armbands valid
from 11^{am} to 3^{pm}

Ride Tickets
ON SALE

Coles 1st Nov
10am to 2pm

Or contact Lisa on
0413367580



**Come along for a
fantastic day full of fun!**

For more information please contact
Lisa Jewkes Mobile 0413 367 580
bpsfaircoordinator@gmail.com

www.berowra-p.schools.nsw.gov.au

Location: In the school grounds, corner of Berowra Waters Road and Hillcrest Road

Berowra Public School Canteen

Open Wednesday, Thursday and Friday

You can now order at www.flexischools.com.au or at the canteen

Summer menu Terms 4 and 1

Breakfast Menu 8.50am-9.10am	
Option 1: Weetbix x 2 and Milk	\$2.00
Option 2: Raisin Toast x2	\$2.00
NEW	
Pita Pockets	
Salad filled with mayo, carrot, lettuce,	
Cucumber and tomato	\$4.00
Cheese and salad	\$4.50
Chicken and salad	\$4.50
Ham and salad	\$4.50
Hawaiian Pita-ham, pineapple & cheese	
toasted	\$4.50
Cheese toasted Pita	\$2.20
NACHOS is BACK	
Beef	\$3.00
Vegetarian	\$2.50
Sour cream	\$0.50
Sandwiches	
Wholemeal bread	
Gluten free add \$1.00	
Add 50c to toast sandwich	
Vegemite	\$2.00
Cheese	\$2.00
Ham	\$3.00
Chicken	\$3.00
Egg	\$3.00
Salad - lettuce, tomato, cucumber and	
beetroot	\$3.00
Extras lettuce, cheese or tomato	\$0.50
Toasted Jaffles	
Cheese	\$2.50
Cheese and pineapple	\$3.50
Ham, cheese and pineapple	\$3.50
Ham, cheese and tomato	\$3.50
Baked beans and cheese	\$3.50
Spaghetti and cheese	\$3.50
Hot Food	
Chicken Burger - with lettuce and mayo	\$3.50
Beef Burger - with cheese and either BBQ	
or tomato sauce	\$3.50
The lot - with tomato, beetroot and cheese	\$4.50
Snack Pie 85gm	\$2.00
Garlic Bread	\$0.70
Nuggets (4)	\$2.50
Tomato sauce / BBQ sauce / chilli sauce	\$0.30
Salad Bowl	
4 carrot sticks, 4 cucumber sticks, 4 cherry	
tomatoes	\$1.50
Add diced Chicken or Ham	\$2.50
Morning Tea	
Bread stick	\$0.10
Frozen fruit - portioned frozen	
seasonal fruit	\$0.30
Garlic bread	\$0.70
Fun bun (like finger bun)	\$1.40
Choc and oat biscuits	\$0.70
Assorted cakes and biscuits	\$0.70
Small jelly cup (max 3)	\$0.20
Sausage roll	\$1.00
Pizza muffin	\$0.70
Drinks	
LOL juice varieties	\$2.20
Popper - Apple or Apple Blackcurrant	\$1.00
Plain milk 300ml	\$1.50
Flavoured milk - low fat chocolate or	
strawberry 300ml	\$1.50
Water	\$1.00
Slushie (varieties)	\$1.50
Chips	
Red Rock - Honey Soy or Plain	\$1.20
Jumpies BBQ or Chicken	\$1.00
JJ's Chicken	\$1.20
Ice Creams	
Icy Pole - Lemonade	\$1.00
Ice Monies	\$0.80
Zingers	\$0.50
Assorted ice creams from	\$1.00

**All items on the menu meet
the healthy kids guidelines.**

If you have any questions or comments or are able to volunteer, please call Teresa 9456 1483

GROWN UP'S DISCO IS BACK!!!

TICKETS SELLING NOW!!!

When: Saturday 8 November
Time: 7pm – Midnight
Where: Berowra Community Centre
 (1 Gully road Berowra)
Theme: HALLOWEEN
BYO: Alcohol / Nibbles
Tickets: \$12.00

Chris Jennings - 0413 096 190 or Chris Hindmarsh - 0418 223 587

Or email: over30sbluelight@gmail.com

You too, can dance like no-one is watching!

Please present ticket on the night.

EXTENSIONS & NEW HOMES



HOME DESIGNS & PLANS FROM CONCEPT TO COMPLETION!

- Innovative, functional designs to suit your lifestyle and budget
- Experienced with your local council
- Increase the value of your home & improve your lifestyle



For a free consult call
9986 1311
improving your lifestyle

2203695 25/4

www.lifestylehomedesigns.com.au

Disclaimer: Advertisements placed in THE CREST do not reflect an endorsement or otherwise by Berowra Public School of that product or service. Information in the advertisement is entirely the responsibility of the advertiser.

Art for Kidz in Berowra

www.artforkidz.com.au

All enquires to Nicole Crouch: artforkidz@inet.net.au

All classes held at Yallambee Rd Studio

Mobile: 0411340637

Fully qualified art teacher with over 20 years of Art experience

First aid certificate

Approved working with children check

Bachelor of Visual Arts

Diploma of Education

CLASSES FOR PRE-SCHOOL CHILDREN

Children aged between 4-6 years of age
Classes held on Tuesdays & Fridays

10.30 - 11.30

7 Weeks \$105.00 all materials included

No refunds for missed classes

**BOOK NOW TO
SECURE A
PLACE
TERM 4 2014**

AFTER SCHOOL CLASSES

Children aged between
5-12 years of age

Classes held on
MONDAYS & TUESDAYS
4.00 - 5.15pm

8 Week \$150.00

all materials included

20TH OCT- 9TH DEC
 No refunds for missed classes

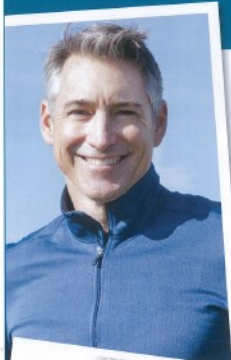


Happy 50th St Ives High School

Celebratory Dinner November 21

Tickets: www.trybooking.com/GCTR

Men's Health Free Public Seminar



**Wednesday 5 November 2014
6:15pm for 7pm start**

Fox Valley Community Centre,
Sydney Adventist Hospital Campus
185 Fox Valley Road, Wahroonga 2076

Presented by leading medical specialists,
learn about:

- **Impotence:** warning signs, what to look out for
- **Prostate Cancer** and new MRI diagnostics
- **Simple tips** for a healthier life at all ages

... with light refreshments and health displays.

BOOKINGS ESSENTIAL

Email comrel@sah.org.au or
phone 9487 9871

(Note office hours are 8:30am - 5:30pm Mon to Thurs,
8:30am - 12:30pm Fridays)

Free parking available - visit
www.sah.org.au/event-calendar for
more information



FREE COMMUNITY EVENT
Proudly sponsored by Fox Valley
Seventh-day Adventist Community Church



www.sah.org.au 185 Fox Valley Road Wahroonga 2076 Tel: 02 9487 9111

TAEKWONDO KUKKI



**FREE
TRIAL LESSON**

**FREE
UNIFORM**
*CONDITIONS APPLY

Call:
9477 6204
or
0412 369 874

Be a friend Make a difference



Compeer volunteers provide
friendship to someone who
is lonely due to difficulties
with their mental health.

An hour a week of your time
can have a big impact on
your new friend's
confidence and quality of
life.

Training and ongoing
support is provided.

volunteer today

www.compeer.org.au

compeer.northernsydney@vinnies.org.au

(02) 9413 3091



Compeer

a Special Work of the St Vincent de Paul Society

THE ATHLETE'S FOOT HORNSBY

**REWARDS PROGRAM IS A PROUD
SUPPORTER OF BEROWRA PS**

The School Rewards Program is a great fundraising
opportunity with \$5 from every pair of shoes
purchased being donated back to your school.

This applies to the whole family across our fantastic
range of school, sports, work and casual shoes.

Ask one of our friendly staff in store for more details.

**\$5 FROM EVERY PAIR OF SHOES
PURCHASED IS DONATED
BACK TO YOUR SCHOOL**



**LOWER GROUND FLOOR
WESTFIELD SHOPPINGTOWN**

Key points to remember around schools

7 Safety around school crossings

Ensure that your child always uses the school crossing as this is the safest point of entry to the school.

Where there is a school crossing supervisor at a school crossing, pedestrians must wait on the footpath, at least one step back from the edge of the road, until the school crossing supervisor indicates that it is safe to cross.

Drivers must not proceed until the crossing supervisor's hand-held sign is no longer displayed, or until the crossing supervisor indicates that the motorist may proceed through the crossing.

At an unsupervised children's crossing when 'CHILDREN CROSSING' flags are displayed, drivers must stop at the white line if pedestrians are waiting to cross at the crossing. Drivers must remain stationary until the crossing is completely clear of pedestrians.

Drivers need to know that a children's crossing is a part-time crossing that operates before and after school hours, and at times when children are using the crossing, such as for excursions or during lunchtimes.



8 40km/h school zones

The 40km/h school zone slows traffic in the vicinity of the school.

Most 40km/h school zones operate between 8am and 9.30am and from 2.30pm til 4pm. The 40km/h school zone speed limit must be observed even if school children cannot be seen.

A 40km/h school zone operates on all gazetted school days including staff development days (pupil free days).

While some schools may operate on different term dates, school zone speed limits MUST be adhered to during NSW Government determined school terms.

Gazetted school term dates for 2014 and 2015 are listed below. These can be found at roadsafety.transport.nsw.gov.au website and the websites of the NSW Board of Studies, Teaching and Educational Standards and the NSW Department of Education and Communities.

Dragon's teeth road markings

To increase motorists' awareness of 40km/h school zones, triangular dragon's teeth road markings indicate that the vehicle is entering a school zone.

For information about fines and demerit points – visit rms.nsw.gov.au

GAZETTED SCHOOL TERM DATES

	2014	2015
TERM 1	28 January to 11 April	27 January to 2 April
TERM 2	28 April to 27 June	20 April to 26 June
TERM 3	14 July to 19 September	13 July to 18 September
TERM 4	7 October to 19 December	6 October to 18 December

For more information visit
roadsafety.transport.nsw.gov.au