



18th October, 2017
Term 4 Week 2

Everyone who remembers his own education remembers teachers, not methods and techniques. The teacher is the heart of the educational system.

The Crest

Self

*Respect
Others*

Community



*Thank you School Support Group for
the fantastic morning tea and
recognition on World Teachers' Day*

Berowra
Public School



Phone 9456 1319
Website www.berowra-p.schools.nsw.edu.au
Email berowra-p.school@det.nsw.edu.au



Welcome back to Term 4.

I hope that you had a restful and happy break and you are ready to move into what is usually the busiest term of the year. Our Year 6 students are now into their final term of primary school which is very exciting and as a school we begin to plan ahead for the end of year festivities and for the beginning of 2018.

Our Kindergarten 'Berowra Beginners' program for 2018 Kindergarten students began this week. If you have missed out on this special event please contact the office immediately in order for us to include all students in this exciting program. The program is designed to assist the children to feel more relaxed and comfortable about starting at school next year by introducing them to the teachers and to their new friends in an enjoyable and informal manner.

World Teachers' Day

"The dream begins, most of the time, with a teacher who believes in you, who tugs and pushes and leads you on to the next plateau, sometimes poking you with a sharp stick called truth." (Dan Rather)

I can still remember most of my teachers and the wonderful role models they were for me. I am very proud to be a part of the teaching fraternity at Berowra Public School.

Every day our teachers make a difference as they inspire and engage our students to learn and succeed. Our teachers go 'above and beyond' for our students.

Many of our teachers have spent nights away from their families recently at overnight excursions. 'It's all part of their job' – I recently heard this comment and I was speechless. Teachers take students on overnight excursions because they are prepared to give that 'bit extra' for our students. Overnight camps are an added extra not a mandatory part of education. Many schools are unable to offer these overnight excursions as they do not have the staff willing to give of their time – freely!

I was most impressed by some of the messages that the children wrote about their teachers....

- You give me strength
- I am so happy that you are my teacher
- You have made me a better person
- You are the best teacher ever
- I love that you help me
- Thank you for understanding me

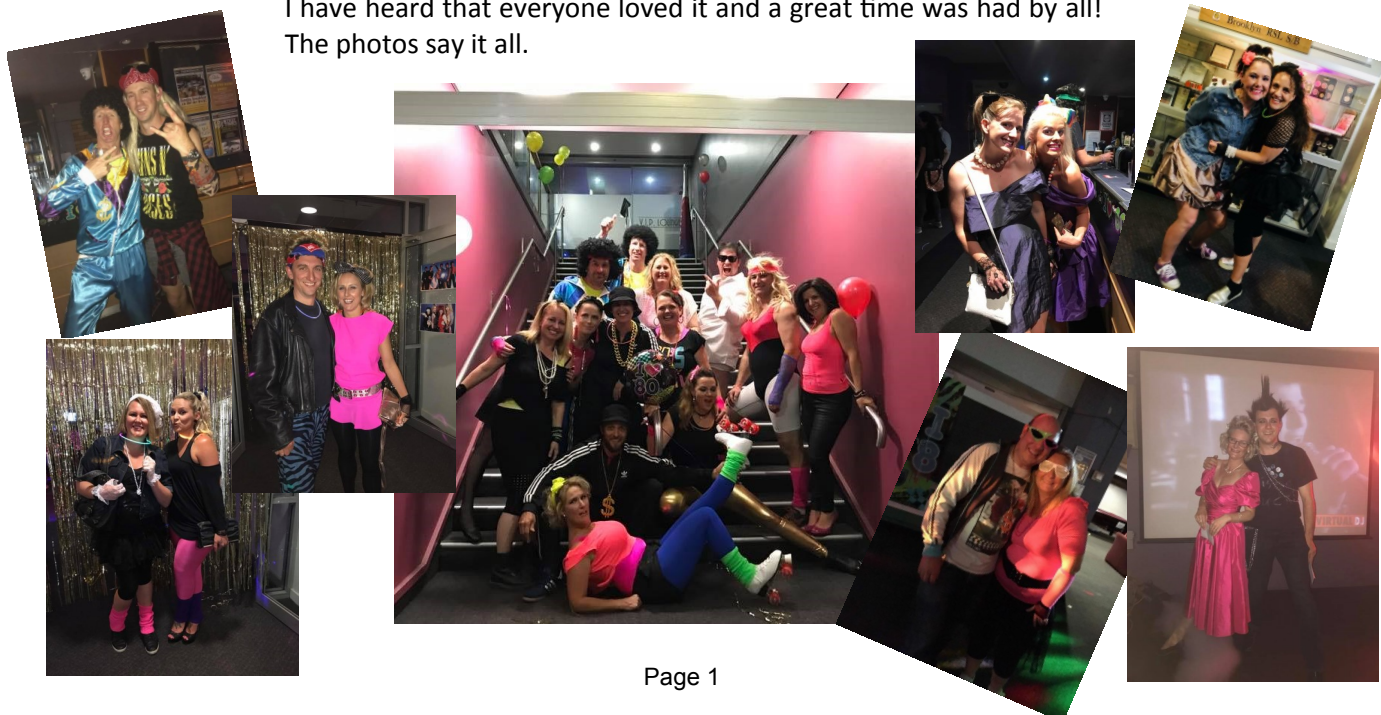
Many thanks to our School Support Group who recognised and thanked our wonderful teachers this year with a special World Teachers' Day assembly and a scrumptious morning tea. The teachers were thrilled and loved every minute of their special day.

Thank you to all the parents involved in this great tribute to our fantastic teachers.

80's Disco

Many thanks to Belinda Barton, Sharn Barton, Doxia Brownlow, Steph Beard, Simone Davies and Christine Jennings for organising a very successful 80's Disco at the Berowra RSL last Saturday.

I have heard that everyone loved it and a great time was had by all!
The photos say it all.



Classes for 2018

During Term 4 many parents begin to think about classes for the following year. The staff and I are concentrating on providing the best education for children in 2018, consequently plans for next year regarding teachers on certain grades are not in place. Please do not assume that teachers will remain on the same grade next year.

Requests for a particular teacher cannot be accommodated. I also ask parents not to attempt to pick and choose who they would like their child to be or not be with next year. Genuine and special reasons should be directed by phone, letter or interview to the principal. Class teachers or executive will not take requests for class placement next year. Naturally, parents will discuss their child's needs with the class teacher but promises of classes and teachers will not be made by the 2017 class teacher. In short, see me if you have any concerns, but please trust the teachers and me to place your child in a class where they will have friends and learn in an engaging friendly atmosphere.

We are carefully monitoring our anticipated enrolments for 2018. Thanks to those who have already returned an enrolment application. Please contact the school for an enrolment package if you have a sibling yet to enrol or **you are aware you will not be returning to BPS in 2018** and have not yet notified us.

A few thoughts

NSW Public Schools are provided with teachers and staff on an age-based differential formula. Once the principal enters anticipated numbers of students, DoE Staffing will allocate a set number of teachers, SLSOs, School Administrative Staff, Counsellor times etc.

It is then the principal's job, with many hours input by the teachers, to devise the best mix of classes to suit the available resources.

Please keep in mind that as professional educators, we place students in classes after carefully analysing a variety of academic and social criteria. This may mean that students are not with the same classmates as in the previous year, although we do try to ensure that they have a familiar face in their class. Classrooms are first and foremost about learning and getting along with the teacher and peers in their class and of course students can always meet up with all their friends in the playground (remembering that their longest break from all their friends is TWO hours). Being able to form a wide range of happy, productive and polite relationships, with a number of people of all ages, assists students as they become older to get along with the many different individuals and personalities they will come across in their life.

Rarely do we get this placement wrong.

Parents deserve and will be provided with reasons for class placement of their child if requested, but there has been disappointing trend of late with parents demanding that their child is moved from their class placements. Rarely is it possible to move just one child from a class to another, or to 'swap mine with this kid'. The complexity of classroom personalities and the interconnectedness of classroom interactions rarely allows for such an easy 'swap'.

Whilst we will always listen to (and take into consideration) the concerns of parents, it is in the end, the decision of the principal and the school as to where the best learning setting for each individual student is.

At the end of this year, class placements will be done by our teachers. Please do not send in requests for special placements as the teachers will ensure your child/ren will be placed in the perfect class for them.

ENROL NOW FOR KINDERGARTEN 2018

If your child or you know of a child ready to start school next year make sure they are enrolled so we can include them in our plans for next year.

Beginners Group started week 2 and Kindergarten Orientation Day is on Thursday 23th November from 10am.

For more information contact the school office on 9456 1319.



Road Safety

Please ensure that our children are safe at all times:

- Walk your children across the road at the crossing
- Do not attempt U-turns across Hillcrest Rd
- Wait for the 'Crossing Lady' before crossing
- Do not get out of your car at "Kiss and Drop"

Selective high schools application

On Tuesday, 10th October, 2017 the online applications opened for entry to Government Selective High Schools for Year 7 in 2019.

Application is required by mid November 2017 for parents or carers of Year 5 students who wish their children to be considered for placement in Year 7 at a selective high school in 2019.

Parents with internet access are requested to apply online. Online applications will be available from 10 October to 13 November 2017.

Application information is available on the Department's internet at: www.schools.nsw.edu.au/shsplacement. All students seeking Year 7 entry to a selective high school in 2019 will be required to take the Selective High School Placement Test on the morning of Thursday 15 March 2018.

Resilience and our children

"Life is not about what happens to us but what we do about it"

As much as we would like to defend our kids from the difficulties in life, from experiencing crisis, change or loss, we cannot! However, we can give our kids the tools to recover from difficult times when those hit.

For kids, changing seats in the classroom, a friend saying, "I'm not your friend anymore", or not being invited to play during a break can be "the end of the world". Still, the way kids (and adults) deal with these difficulties is what sets kids apart.

Resilience is part of our emotional intelligence. When faced with a problem, resilient people focus on finding a solution rather than getting depressed and feeling like victims. Resilience is another name to emotional strength.

Resilience is not ignoring unacceptable behaviour and walking away. Please ensure that if your child is a victim of 'unacceptable behaviour' that yes, they ignore and walk away BUT they must inform a teacher, in order for us to intervene and monitor unacceptable behaviour at school.

As parents (and teachers), our role is to help our kids respond positively and with strength.

Our lives are not determined by what happens to us but by how we react to what happens, not by what life brings us, but by the attitude to what we bring to life.

A positive attitude causes a chain reaction of positive thoughts, events and outcomes.

Di Bower

Principal

THANK YOU

Thank you to everyone who has paid for their children's classroom resources (student pack) as well as the voluntary school contribution.

Every student received a student pack which could consist of things such as :- Mathletic, Spellodrome and Reading Egg licences, exercise books, scrap books, school magazine or show me student whiteboards and markers. Every school year is different.

These resources are used in the classroom every day by your children and we appreciate your help.

If you are unsure if you have paid for the student pack or school contribution, or any of the extra curricular or excursions please contact the school office.

You are invited to our

BPS M.a.D.D. Night!



In a celebration of Performing Arts at Berowra Public, we are having a Music and Dance and Drama night.

Every performance group in the school will have the opportunity to perform, as well as some very talented soloists. The program looks fabulous and it is a night not to be missed!

Monday 23rd October

7pm

Berowra Public School Hall



See you there!



Dance News

Our dance groups have had another successful year with performances at Sydney North Dance Festival and Hornsby Music Festival. The girls were honoured to be selected to perform at the State Dance Festival and 16 of these girls were also chosen to represent BPS at the Schools Spectacular. Don't forget to buy your tickets. There are four shows over two days on Friday 24th and Saturday 25th November. Get online now and purchase your tickets to this amazing show! Search Ticketek or use this link

<https://premier.ticketek.com.au/shows/show.aspx?sh=SCHLSPEC17>

Auditions will begin soon for places in the 2018 Dance Groups. Auditions will take place over three weeks. All students interested in auditioning must come along to the hall on Tuesday 7th November after lunch eating time to learn a short routine. Boys currently in Years 2, 3, 4 and 5 will then audition on Tuesday 14th November. Girls currently in Years 3, 4 and 5 are invited to try out on Tuesday 21st November. I look forward to seeing everyone.

End of term dance performance - This term I have the pleasure of teaching 1D, 2C, 4C and 4P for dance. They will be learning a number of dances as well as creating some of their own movement. They will perform for everyone on Thursday 30th November at 2:45pm.



**Happy
Grandparents'
Day**

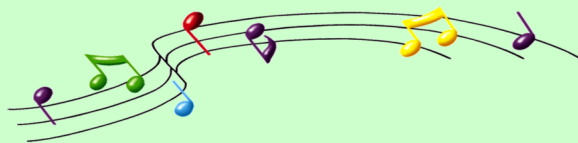
**BEROWRA
PUBLIC
SCHOOL**

**TUESDAY
31ST OCTOBER**

12:45-1:30PM - CLASSROOM VISITS
1:30-2:00PM - PICNIC LUNCH

**Please join us for a visit to your
grandchild's classroom to share
your school tales, followed by a
picnic lunch on the oval.**

**Please bring your own picnic lunch
and something to sit on.**



Dear K-2 parents

It is almost time for our wonderful musical extravaganza -

"The Magical Christmas Box".

All K-2 students will be performing on **Tuesday 5th December** at 10am and again at 12noon.

Please come along to see this wonderful event.

Admission is **FREE!** However, \$7.00 is asked from each child to cover production costs such as costumes, lights and sound. Payment to class teacher.

Class Awards

Week 9 term 3 & Week 10 term 4

KB	Riley U, Roya M, Erin P, Hayden W
KR	Lachlan W, Sophie D
KY	Nikolai McG, Dillon K, Isaac A, Luca R
1D	Matthew T, Pethybridge A
1S	James Y, Harper G, William H
1T	Darcy F, Billy Y, Emma W, Kai G, Ryan H
2C	Rhyan K, Charlotte G
3A	Lily P, Archie R, Tatiana R, Raiph C, Cameron P, Tara T, Molly N, Edward G, Taye C, Marcus Z
3R	Lucy H, Harrison B, Farrah P, Max M, Alan A, Preston B, Chloe L
4C	Annabelle H, Liam J-B, Alexander McG, Finn B
4P	Jed W, Aidan C, Dylan D
5/6B	Leela S, Evie P, Haylee S, Parisa G, Jensen G, Allisha M
5/6K	Lucy T, Madeleine B, Fiona T, Anthony L, Shauna R, Ollie G
5/6S	Mac T, Elise O-C, Samuel S, Cooper G, Jessica Y, Jake DS, Brooke F, Hayley C, Zoe A, Corey S, Mackenzie F, Ben P, Josephine O, Samantha S



Cancer Council
NSW

Nutrition Snippet

The simplest way

...to download our free resources.

We have a bunch of great resources on our website for you to print out – free – to help make your whole family healthier.

- Reward your kids using our **My Fruit and Vegetable Chart**.
- Plan ahead, save time and money with your **Family Menu Planner**.
- Make packing lunches easier with our **Healthy Lunch Box Planner**.
- Learn how to manage fussy eaters with our **Strategies for Fussy Eaters Guide**.
- Get new ideas for healthy snacks with our **Fruit and Vegetables Snacks Guide**.
- Find out when to buy your fruit and vegies in our **Seasonality Guide**.



Visit <https://tinyurl.com/ycp5a89a> to download.

For more information visit
www.eatittobeatit.com.au
or join us at facebook.com/eatittobeatit

Eat It To Beat It

Does your child require medication during the school day?

If your child needs to take any prescribed medication during school time, the office can administer it for you.

The medication must be handed into the office in the morning together with a completed 'Medication Request Form'. This form can be located on our website under 'Our School' tab then 'Missed a Note?' or completed at the office.

Only prescribed medication in original packaging can be accepted or over the counter medication with a doctor's note.

Please do not give medication to children to self administer during the day for their safety and the safety of other children.

The only exception is Ventolin for asthma.



Upcoming Events

OCTOBER

Wed 18	P&C meeting in the staffroom at 7.30pm
Thurs 19	String & recorder tryouts from 1.30pm
Sat 21	Family Portrait
Mon 23	MaDD Night -Music Dance and Drama from 7pm. Performing Arts night
Tues 24	Student Parliament Mufti Day
Wed 25	Band tryouts at lunchtime
Thurs 26	BOOSH Pink Morning Tea—proceeds to Cancer Council
Fri 27	BPS Funky Friday Disco
Tues 31	Grandparents Day 12:45-2:00pm—visit and have picnic lunch with children

NOVEMBER

Mon 6	League Tag Gala Day
Tues 7	Canteen special meal day Dance audition at lunchtime to learn routine
Tues 14	Fair Mufti Day Boys dance audition at lunchtime for years 2,3,4 & 5
Wed 15	P & C meeting in the staffroom at 7.30pm
Thurs 16	Asquith HS Experience Day for year 5 students
Thurs 23	Kindy 2018 Orientation Day 10.00-11.15 in the hall
Fri 24	School Spectacular performances - matinee and evening
Sat 25	School Spectacular performances - matinee and evening
Tues 28	Canteen ice cream day
Wed 29	Christmas scripture service at BPS hall
Thur 30	End of term dance performance at 2.45 - 1D, 2C, 4C & 4P

DECEMBER

Tues 5	K-2 Nativity Concert 10am and 12noon
Wed 6	Presentation Day—3-6 at 10am, K-2 at 12noon
Fri 8	Band Christmas evening
Mon 11	Year 6 Farewell at Asquith Golf Club
Wed 13	Surf Awareness Program at Collaroy Beach for Year 5 and 6
Fri 15	Last day of term for students

Don't forget The Crest is also available on the school website:
www.berowra-p.schools.nsw.edu.au
Click on the 'Newsletter' tab.

Parent Online Payments can also be made from the BPS website using the 'Make a payment' tab.

Looking for lost notes? Click 'Our School' tab then 'Missed a Note?'

Upcoming events are under the 'Calendar'.

Dear Families,

We are holding a portrait fundraising day and would be delighted to receive a donation from you in return for a 10"x13" family portrait and keyring (of your family – valued at \$90!) by Laura Jean.

How long has it been since you had your family together for a group photo? Update your family pics with their relaxed and fun photographers.

laurajeon.com.au

facebook.com/laurajeonfundraising



HUGE 10"x13"
FAMILY PORTRAIT
PLUS KEYRING



Every family can receive this personalised photographic service, close to home.

Flexible options include posing choices and obligation free additional portraits to suit your needs.

We will receive 100% of funds raised from your donation, plus bonuses (including a portrait pack plus digital images, which you may win!) when 25 families participate.

So please help us by inviting an extra family to our fundraiser.

ORGANISATION:

BEROWRA PUBLIC SCHOOL

RAISING FUNDS FOR:

BEROWRA PUBLIC SCHOOL

CONTACT:

TAMMY – 0402 464 743 - tam_m_allen@hotmail.com

www.trybooking.com/316383

DONATION:

\$21 & RECEIVE A 10X13" PORTRAIT + KEYRING

PHOTO DATE:

SATURDAY 21ST OCTOBER



WIN a 3-Pose Portrait Pack

When 25 families are photographed, one lucky family receives a complimentary portrait package + images.

How can you help us get there?

- Return your voucher ASAP
- Invite a friend with additional voucher below
- Encourage more families to book

HOW TO BOOK

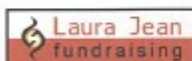
If you see a link provided to the left, click on this to make payment and choose your booking time.

OR

Complete voucher and return to office with your donation and an appointment time shall be confirmed soon.

Invite a friend to help our fundraiser.

PLEASE CUT OUT AND RETURN TO OFFICE

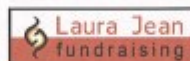


Voucher for 1x 10"x13" Family Portrait + Keyring at special Fundraising Price

Oldest child's full name: _____
Class: _____
Mobile or home no: _____
Email: _____
Preferred time: _____

*Very special limited offer – please see back for details

PLEASE CUT OUT AND RETURN TO OFFICE



Voucher for 1x 10"x13" Family Portrait + Keyring at special Fundraising Price

Oldest child's full name: _____
Class: _____
Mobile or home no: _____
Email: _____
Preferred time: _____

*Very special limited offer – please see back for details



Pink Ribbon Morning Tea



You are invited to attend a Morning Tea to help raise awareness and funds towards the fight against Breast Cancer.

100% proceeds will be donated to Cancer Council for research and to support those fighting against this disease.

**Morning Tea will be provided
Lucky Door Prizes
Raffle.**

Bring a friend, a smile and some cash for a donation and raffles.

DATE :- Thursday 26th Oct 2017

TIME :- 9.30 – 11.00 AM

WHERE : BOOSH Cottage (Berowra Public School)

All are welcome



World Teacher Day Assemblies



BORROWED CLOTHING

From time to time students need to have a change of clothes during the day. The office holds a small amount of clothing which we lend to the students.

If your child has come home with different clothes and a note from us, please wash the items and return them to the school office, or classroom, as soon as possible so they will be available for use again.

To assist with this process it would be helpful if Kindy parents packed spare underwear in their child's school bag.

Thank you

MAKING SCHOOL PAYMENTS

Please note that money collection days at Berowra Public School are
Tuesdays and Thursdays only.

For security of payments it would be appreciated if money only be sent to school on these days in a signed payment envelope, not plastic bags. This includes any payments for the choir, drama, sport or extra curricular activities.

We have only two days a week allocated to receipt money so please remind your child to give it to their teacher in the morning as receipting and banking are completed during the day. Correct money is appreciated as the office is unable to hold change.

Please do not hand payments into the office after school.

Handing money into the office after banking has been completed may result in confusion for the teacher and your child's name not marked off as having paid for an excursion, sport or any activities.

Any payments for the P&C or Support Group fundraisers and the canteen special lunch days can also be handed to the class teacher, but please include these in separate envelopes and with separate payment. Do not include with school payments.

You can make multiple payments for multiple students with the one cheque or credit card if you like. Just make sure all details are included and permission is forwarded.

Don't forget that you can also pay online. However, signed permission envelopes are still required to go to the teacher for excursion. Just mark on it that you paid online.

Please also be aware that when using the Westpac Parent Online Payment system, all payments processed after 6pm will not be seen at the school until the second business day eg payments made after 6pm on Monday evening will be on the Westpac report on Wednesday morning, payments made after 6pm Friday will be seen on Tuesday morning.

Thank you for your cooperation.



Cowan Public School Presents

Cowan Twilight Markets

Friday 27th October 5-7pm

cowantwilightmarkets@gmail.com

9456 1065

A wide variety of market stalls
including arts, craft, fashion,
fresh produce, Christmas item,
plants and much much more



Entertainment by local musician
Kids entertainment—sand and balloon art
Food—Café, and BBQ
Entry is Free so come along for some food,
entertainment and family fun!

Assemblies



INTERSCHOOL SPORT

Friday 20th October

Games start by 9.30am

Friday 27th October

PSSA Cricket and Softball/T-ball

v Warrawee

at

Warrina St Oval

Warrina St Oval

.....

Cricket

.....

Softball/T-ball

.....

v Waitara

at

James Park

Mark Taylor Oval

PSSA League Tag

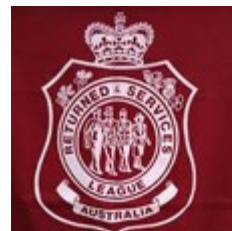
always at

Foxglove Oval



WANTED!

MUSICIANS TO PLAY IN COMMUNITY BAND



Are you in Year 6 and thinking about continuing playing in a Band next year? Currently in a band but wanting to add to your musical experience?

Berowra RSL Sub-Branch Youth Club Band [Conductor: Grant Hughson] is looking for experienced musicians to join its wind band. The Band is for musicians aged from senior primary school age up to 24 years with at least 3 years experience who are looking to have fun and perform at local community events such as the RSL Sub-Branch commemorative services, school fetes, community markets and fairs.

Rehearsals are held on Tuesday afternoons from 5.30-6.30pm (term time only) at the Berowra Community Health Centre, 123 Berowra Waters Road, Berowra Heights.

For information go to our facebook page, email us on rlsyouthclubband@gmail.com or phone Christian Langeveldt mob: 0415465894

NSW Education Public Schools

SCHOOLS SPECTACULAR 2017

OWN THE MOMENT

FRIDAY 24 NOVEMBER
11.00AM MATINEE
7.30PM PERFORMANCE

SATURDAY 25 NOVEMBER
1.00PM MATINEE
7.00PM PERFORMANCE

QUODS BANK ARENA
SYDNEY OLYMPIC PARK

TICKETS AVAILABLE FROM TICKETEK.COM.AU OR CALL 132 849
PLUS ALL OUTLETS WWW.SCHOOLSPECTACULAR.COM.AU

PRINCIPAL SPONSOR: T

IN ASSOCIATION WITH: Teachers Mutual Bank, REGIONAL Z CONSERVATORIUMS

BROADCAST PARTNER: 7

VENUE PARTNER: AEG OGDEN

in2 CRICKET

GET in2 FUN GET in2 CRICKET

MILO in2CRICKET introduces girls and boys, aged 5 - 8, to Australia's favourite sport. It's great fun, kids learn the basic cricket skills and is available for kids of all abilities.

All kids receive a **BONUS PLAYER PACK** when they register!

BCC MILO Have-A-Go introductory session:
Sunday, 22nd October 3-5pm at Warrina Street Oval

BCC MILO in2 Cricket program:
Saturdays from 8:30 to 9:30am
November 4th to December 15th 2017
& February 3rd to March 2nd 2018

Visit www.berowracricket.org to register

BCC

Brooklyn Community Theatre presents...

perfect Wedding

A Comedy by Robin Hawdon

Rest Park Pacific Highway Brooklyn

Gates open 6pm
Curtain up 8:30pm

TICKETS

Adults \$15 / \$20
Child/ Conc. \$10
Family \$35 / \$40

Available online or from Hawkesbury River Real Estate, or at the gate.

Strictly no parking on site.
Courtesy buses from the Anglers Rest Hotel, Brooklyn and Mooney Mooney Club from 6pm. Last return bus 11PM.

SATURDAY 28th OCTOBER

ST BERNARD'S CATHOLIC SCHOOL

St Bernard's BUSH FAIR

10am to 3pm
Saturday 28th October

Warrina St, Berowra Heights

Fair Stalls include:

- Devonshire Tea & Treasure
- Side Show Alley
- Plant Stall
- Café - Italian Treats - coffee Shop
- Dunk the Teacher and Popcorn
- Cakes and Books
- Wine Tombola
- Haunted House/Haunted Stall
- Snow Cones, Fairy Floss, Face Painting,
- Ride Bands/Tickets, Hot Dogs
- Bush Fair Food - Old Fashioned Good wholesome yummy food

For enquiries email stbernardsfete@gmail.com For ride passes use <https://www.trybooking.com/RTON>

frangipani designs photography, Bendigo Bank, McGrath, ASSURED, CLASSIC GAUGE

THE ATHLETE'S FOOT HORNSBY

REWARDS PROGRAM IS A PROUD
SUPPORTER OF BEROWRA PS

The School Rewards Program is a great fundraising opportunity with \$5 from every pair of shoes purchased being donated back to your school.

This applies to the whole family across our fantastic range of school, sports, work and casual shoes.

Ask one of our friendly staff in store for more details.

\$5 FROM EVERY PAIR OF SHOES
PURCHASED IS DONATED
BACK TO YOUR SCHOOL



LOWER GROUND FLOOR
WESTFIELD SHOPPINGTOWN



Nutrition Snippet

The simplest way

...to add Spring produce to your menu.

Adding seasonal produce to your weekly menu not only tastes better, but buying fruit and veg in season can be up to 35% cheaper than other times of year.

Here are four easy ways to add more Spring veggies and fruit to your day:

- **Add some legumes** – add chickpeas to your salad, stir kidney beans through your bolognaise sauce, add canned lentils to your sausage roll mix.
- **Put veggie sticks in every lunch box** – carrots are super cheap in Spring, cut them into sticks and pack them with a small container of hummus.
- **Roast veggies and use in sandwiches** – roasted pumpkin and zucchini are delicious on wholegrain bread.
- **Make fruit salad cups** – cut up some strawberry, apple and rockmelon and put in a cup for a sweet, tasty treat.



For more information visit
www.eatittobeatit.com.au
or join us at facebook.com/eatittobeatit



Canteen Volunteers urgently needed

Any amount of time on a Wednesday, Thursday or Friday that you can spare would be greatly appreciated. Lunch provided.

Call Teresa on 0402 855 941, see her in the canteen any Wednesday, Thursday or Friday between 9.00am - 2.30pm or leave your details at the office.

Disclaimer: Advertisements placed in THE CREST do not reflect an endorsement or otherwise by Berowra Public School of that product or service. Information in the advertisement is entirely the responsibility of the advertiser.

SCHOOL ZONE ROAD SAFETY in the Hornsby Shire

Parking is a limited resource around our schools these days. Schools are growing in size as our city expands. Traffic congestion is getting worse around schools during peak periods. While we can no longer provide parking for every parent that wants to park near a school, we can, with your help, manage access safely and equitably. Road safety improves, and complaints are reduced when school staff, parents, Council, Police and the RMS collaborate together to manage this effectively. Now is the time to make some changes by delivering alternative, sustainable and safe travel solutions for your school community.

Construction Zones around schools

Over the course of the coming year pupils walking to school may be effected by construction activity relating to road works or development on private land. Council may be able to assist with planning alternative routes or limiting work during school travel peak periods.

CONSTRUCTION ZONES



Children's Crossings

Children's Crossings are legal pedestrian crossings only when the orange flags are displayed in the school zone, morning and afternoon peak periods.

KIDS CROSSING



SCHOOL

Too many cars? Not enough parking?

Have you thought of running an organised set-down or pick-up program at your school. Request a copy of the Schools Travel Ideas guide to find out more.



TOO MANY CARS



Are drivers unaware of the road rules in your school zone?

Educate them with Council's FREE school zone road safety information. Available in English, Chinese and Korean languages.

SCHOOL ZONES

40



ACCESS TO SCHOOL

Getting complaint's about access to your school and don't know what to do?

Contact Council's Road Safety Officer by phone on 9847 6616 or email: trafficbranch@hornsby.nsw.gov.au

Tired of repeat parking offenders?

Councils traffic ranger patrols in school zones are based on a rostered system which runs per school term. For increased ranger patrols or to request our on call ranger, contact the Council's ranger coordinator by phoning 9847 6616 or email trafficbranch@hornsby.nsw.gov.au



HOME



SunSmart Snippet

The simplest way

...to be a good role model!

Did you know?

Researchers, parents and teachers know that children imitate adult behaviour. That's why role modelling sun protection is so important!

How you can be a role model:

- **Slip** on clothing which covers as much skin as possible.
- **Stop** on 30+ broad-spectrum, water-resistant sunscreen.
- **Slap** on a broad brimmed, legionnaires or bucket hat.
- **Slide** on some wrap-around sunglasses.
- **Seek** shade when outdoors.



Don't forget – when the UV reaches 3, we protect against UV! You and your kids can check the UV level together by downloading the SunSmart app!

Set a positive example and your kids will follow your lead!

To help keep your kids safe in the sun, check your schools SunSmart status by heading to www.sunsmartnsw.com.au



MOBILE PHONES AT SCHOOL



Parents and students are reminded that mobile phones are not to be brought to school except in exceptional circumstances.

Then the mobile phone must be left at the school office before school and collected at the end of the school day.



Hillcrest Road, Berowra 2081
Phone 9456 1319
16th October, 2017

Intention to apply for Year 7 entry to a selective high school in 2019

Dear Parent/Carer

Selective high schools cater for highly achieving academically gifted students who may otherwise be without classmates at their own academic and social level. These schools help gifted and talented students to learn by grouping them with other gifted and talented students, teaching them in specialised ways and providing educational materials at the appropriate level.

Applications for selective high school placement are considered mainly on the basis of the Selective High School Placement Test results and school assessment scores. The Selective High School Placement Test will be held on Thursday 15th March, 2018.

If you would like to have your child considered for Year 7 selective high school entry in 2019, you need to do so soon. You will need to **apply on the internet** using a valid email address (not the student's email address).

Detailed instructions on how to apply online will be available from 10 October 2017 in a printed application information booklet and at www.schools.nsw.edu.au/shsplacement. The application website opens on **10 October 2017** and closes on **13 November 2017**. **No late applications will be accepted.**

There are no paper application forms. If you do not have internet access, you could apply at a public library. If you have a disability that prevents you from using a computer, you can contact the Unit for assistance after 10 October 2017.

You must submit only **ONE** application for each student. Remember the tear-off strip below is not an application and the school cannot apply on your behalf.

Yours sincerely

Di Bower

Cut along the dotted line and return the completed slip below to this school by **Friday, 20th October, 2017**.

Note: THIS IS NOT AN APPLICATION FOR ENTRY TO A SELECTIVE HIGH SCHOOL. This is a notice to your primary school only that you *intend* to apply.
TO APPLY YOU WILL NEED TO REGISTER AND THEN APPLY THROUGH THE HIGH PERFORMING STUDENTS APPLICATION WEBSITE.

Intention to apply for Year 7 entry to a selective high school in 2019

Student's Name _____

Class _____

I am interested in applying for selective high school entry in 2019

Yes ☐ No ☐

If Yes EITHER:

I have internet access and will be applying online ☐

OR

I do not have internet access ☐

Signature of parent/carers _____ Date _____