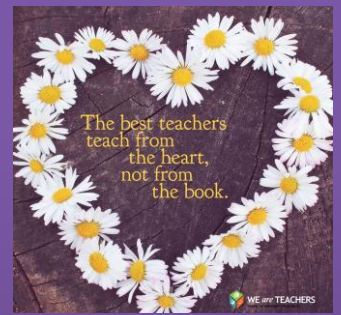




15th November, 2017
Term 4 Week 6



The Crest

Self

*Respect
Others*

Community



Berowra

Public School



Phone 9456 1319
Website www.berowra-p.schools.nsw.edu.au
Email berowra-p.school@det.nsw.edu.au



It's great to be back! For those who didn't miss me I've had two weeks with my family in Bali – soaking up the sun and having heaps of fun with the grandchildren.

Welcome Miss Sarah

Congrats to Louisa Cabral and family on the birth of their gorgeous daughter, Sarah. Baby Sarah arrived on Sunday, 5th November at 6.10am. She is one very happy and healthy baby. She was born 3.62kg and 49.5 cm long.



Morning Supervision

Morning Supervision commences at **8:50am**. Before this time teachers are busily preparing for their day – they could be in their classroom, staffroom or usually in one of the many meetings they have to attend weekly. The playground is NOT supervised before **8:50am**. If for some unforeseen reason your child is at school prior to **8:50am** they should be either at BOOSH or sitting on the silver seats at the outdoor stage.

Please do not leave your child at school prior to 8:50am as they will be unsupervised.

Late Arrivals and Early Departures

If for some urgent reason you need to collect your child/ren from school or are late getting to school please remember you must sign them in/out at the office.

You will need to sign them in or out on the iPad and also fill in a purple – Parent Authorisation Slip (PAS). This purple slip must also be delivered to the class teacher for their records.

Kids Giving Back

I received this email last week.....

"I am writing to let you know you that **Evie M** (4C) is a credit to your School. Evie was part of a team of 39 Kids Giving Back volunteers who cooked, packaged and delivered over 350 warm, nutritious meals to local shelters and individuals in need this past Sunday.

Evie took part in our Community Cook4Good Program with her family and should be commended for giving up her time to help others. The photos of the day will be on our Facebook page here:

<https://www.facebook.com/KidsGivingBack>.

We are also looking for Kids Giving Back School Ambassadors for 2018. School Ambassadors are students in Year 6 who help us share volunteering opportunities with the wider School community. If you have students that would like to take this position, please contact: <http://kidsgivingback.org/about/> for more information."

We are so proud of all Evie's efforts and her dedication to helping others. She is a great role model for others.



School Spectacular

Wishing all the dance girls involved in School Spectacular on 24th and 25th November all the best for a great performance. I am so proud of their dedication to dance and NSW Public Education. Also, congratulations to Fiona T (5/6K) who is also involved in School Spectacular in the combined choir.

All these girls have given so much of their time and talents to this 'spectacular' event.



Di Bower

Principal

ENROL NOW FOR KINDERGARTEN 2018

If your child or you know of a child ready to start school next year make sure they are enrolled so we can include them in our plans for next year.

Kindergarten Orientation Day is on Thursday 23th November from 10am.
For more information contact the school office on 9456 1319.



Where's Wally Day Fun!

It was wonderful to see the whole school getting into the spirit of our "Where's Wally" Day. It is 30 years since Martin Handford wrote and illustrated the first Where's Wally book. They are some of the world's most popular books for children.

The school was awash with red and white stripes, black glasses, denim jeans and skirts, walking sticks and of course "Where's Wally" books.

The library made a special day of it with playground hunts for Where's Wally pictures, videos of characters, information about Martin Handford, pictures of Wally and Odlaw, Wenda, Woof and Professor Whitebeard and just enjoying finding Wally in our collection of "Where's Wally" books.

Thank you everyone for making it such a special day.

Jennie Smith
Librarian



THANK YOU

Thank you to everyone who has paid for their children's classroom resources (student pack) as well as the voluntary school contribution.

Every student received a student pack which could consist of things such as :- Mathletic, Spellodrome and Reading Egg licences, exercise books, scrap books, school magazine or show me student whiteboards and markers. Every school year is different.

These resources are used in the classroom every day by your children and we appreciate your help.

If you are unsure if you have paid for the student pack or school contribution, or any of the extra curricular or excursions please contact the school office.

MUSIC NEWS

Enrolments for Music Groups 2018

In the last few weeks the band, strings and recorders have been visiting classrooms showing students how to play the different instruments and giving them a taste of the wide variety of music we have available at BPS.

Training Band

The Training Band is a beginner Band Program open to students from Year 3 onwards. Instruments in the band include trumpet, trombone, saxophone, clarinet, flute and percussion. Weekly rehearsals are on Friday morning 8am-9am with our enthusiastic conductor. Students in the band are required to have a private lesson each week to teach them the skills they need to play in a group environment. Each year the band plays for many school and community events giving the children an opportunity to perform for family and friends and help to build confidence. Fees are \$100 per Term.

Beginner Recorder Ensembles

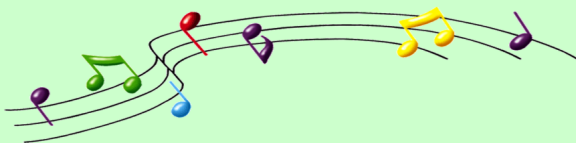
The BPS Recorder Ensembles offer students a wonderful opportunity for quality music education in a group lesson setting. Students from years 1-6 are welcome to join the Beginner program. Lessons incorporate technique building games, music reading and group playing and are held on Tuesday mornings. No prior music knowledge is required. Different learning styles are catered for. Students perform together regularly at school and community events. The Recorder Program starting in Year 1 is a great opportunity for students to learn to read music and build finger dexterity and flexibility. Fees are \$60 per Term.

String Ensemble

The BPS String Ensemble is a group of enthusiastic young musicians who love playing and sharing music together. We are looking for new members for 2018. Students who are learning or would like to learn violin, viola, cello or double bass are encouraged to join us. Students have their own lessons with a private music tutor and then come together to rehearse on Thursday mornings from 8am-9am in the school library. In 2018 the String Ensemble will cater for players from beginners to more advanced students. Fees are \$110 per Term.

Please see the attached Enrolment Forms and more detailed info at the end of the Crest on how to enrol for our Music Groups. Enrolments for 2018 are due by 21st November.

Contact: Naomi Lewandoski bpsband@hotmail.com



Dear K-2 parents

It is almost time for our wonderful musical extravaganza -

"The Magical Christmas Box".

All K-2 students will be performing on **Tuesday 5th December** at 10am.

Please come along to see this wonderful event.

Admission is FREE! However, \$7.00 is asked from each child to cover production costs such as costumes, lights and sound. Payment to class teacher.

Upcoming Events

NOVEMBER

Wed 15	P & C meeting in the staffroom at 7.30pm
Thurs 16	Asquith HS Experience Day for year 5 students
Tues 21	Girls dance audition at lunchtime for years 3,4,&5
Thurs 23	Kindy 2018 Orientation Day 10.00-11.15 in the hall
Fri 24	School Spectacular performances - matinee and evening
Sat 25	School Spectacular performances - matinee and evening
Tues 28	Canteen ice cream day
Wed 29	Christmas scripture service at BPS hall
Thur 30	End of term dance performance at 2.45 - 1D, 2C, 4C & 4P

DECEMBER

Tues 5	K-2 Nativity Concert 10am
Wed 6	Presentation Day—3-6 at 10am, K-2 at 12noon Helpers 'thank you' morning tea 11.30
Fri 8	Band Christmas evening
Mon 11	Year 6 Farewell at Asquith Golf Club
Wed 13	Surf Awareness Program at Collaroy Beach for Year 5 and 6
Fri 15	Last day of term for students

Christmas Cake & Tart Order Form

Name: _____

School or Club: _____

Lemon Tart 6-pack - \$9.00

Fruit Mince Tart 6-pack - \$9.00

Christmas Tree Cake - \$9.00

☐
☐
☐

Total Cost: \$.....

Bakers Delight

**\$2.00 from every Christmas order will be
donated back to your school or club!**

**Please return any orders to the canteen or the school office before
Friday 1st December.**

**Orders will be delivered to school Friday 8th December for collection
after 3pm from the canteen or to go home with children.**

Class Awards Weeks 4 & 5 term 4

KB	Harrison C, Seren D
KY	Ewan H, Tacean P
1D	William S, Freya N
1S	Eric M, Aracia E, Amelia R
1T	Lauren B, Sophia D, Annika S
3R	Zahlee O, Spencer L, Hayden F, Harvey B
3/4P	Corey P, Ryan T, Leon J
4P	Araliya K, Anna P, Scott T
5/6K	Jonathan C, Caitlan F, Zara G, Neve R, Sophia H, Tim C, Isabella A, Mischa M
5/6S	Kusisa L, Jake DS, Liam C

AWARDS

The last day to hand in merit certificates, honour certificates or pennants to the office for inclusion in this years awards is:

Monday 27th November.

Unfortunately we will be unable to guarantee that your award will be included if handed in after this date.

These awards will be carried forward to next year.

Don't forget The Crest is also available on the school website:

www.berowra-p.schools.nsw.edu.au

Click on the 'Newsletter' tab.

Parent Online Payments can also be made from the BPS website using the 'Make a payment' tab.

Looking for lost notes? Click 'Our School' tab then 'Missed a Note?'

Upcoming events are under the 'Calendar'.

Does your child require medication during the school day?

If your child needs to take any prescribed medication during school time, the office can administer it for you.

The medication must be handed into the office in the morning together with a completed 'Medication Request Form'. This form can be located on our website under 'Our School' tab then 'Missed a Note?' or completed at the office.

Only prescribed medication in original packaging can be accepted or over the counter medication with a doctor's note.

Please do not give medication to children to self administer during the day for their safety and the safety of other children.

The only exception is Ventolin for asthma.



BEROWRA PUBLIC SCHOOL KINDERGARTEN ORIENTATION DAY



Thursday 23rd November 2017

10:00am to 11:15am

Please meet at the Hall.

New students will meet new playmates and we have some games and stories for you and you can bring your morning tea in a labelled bag and have it with the teachers and your new friends.

Mums and Dads will meet the Principal, Mrs Bower and members of our parent groups. The Uniform Shop will also be open on this day.

CAROLS IN THE PLAYGROUND

FRIDAY 8th DECEMBER

6pm – 8pm

Berowra Public School, Hillcrest Ave, Berowra

We invite you to come celebrate the end of the year and the Christmas season with a *Twilight Concert and Community Carols.*

Bring a blanket and enjoy a Family Night of Music to celebrate the season.

Sausage sizzle, drinks and ice cream available for purchase on the night or bring a picnic
Music provided by our *School Bands, Recorder Ensembles, String Ensemble, School Choirs* and parents!



Thank you Morning Tea

The staff at Berowra Public School cordially invite the many parent and community helpers who have assisted at the school throughout 2017 to a "Thank You" morning tea.

Where: Hall COLA (outside the canteen)

When: Wednesday 6th December 2017
from 11:30am

This is our opportunity to acknowledge the valuable contribution you have made to our school.

*If you have helped in any way -
e.g. reading, parent committees, school events, transport,
Scripture, fundraising, maintenance, classroom activities -
we would love to see you there.*

*The Principal
& Staff of B.P.S.*



Not returning to Berowra Public School next year??

If you know your child is not returning to BPS for 2018 (except year 6), please inform the school in writing (or email) as soon as possible.

Likewise, if your child is taking an extended summer holiday and returning after Tuesday 30th January.

These preparations help with the 2018 planning of classes

INTERSCHOOL SPORT

Friday 17th November

Games start by 9.30am

Friday 24th November

PSSA Cricket and Softball/T-ball

v Hornsby South
at

Montview Oval
Rofe Park

.....
.....

Cricket
Softball/T-ball

.....
.....

Semifinals
at

PSSA League Tag

always at
Foxglove Oval

MAKING SCHOOL PAYMENTS

Please note that money collection days at Berowra Public School are
Tuesdays and Thursdays only.

For security of payments it would be appreciated if money only be sent to school on these days in a signed payment envelope, not plastic bags. This includes any payments for the choir, drama, sport or extra curricular activities.

We have only two days a week allocated to receipt money so please remind your child to give it to their teacher in the morning as receipting and banking are completed during the day. Correct money is appreciated as the office is unable to hold change.

Please do not hand payments into the office after school.

Handing money into the office after banking has been completed may result in confusion for the teacher and your child's name not marked off as having paid for an excursion, sport or any activities.

Any payments for the P&C or Support Group fundraisers and the canteen special lunch days can also be handed to the class teacher, but please include these in separate envelopes and with separate payment. Do not include with school payments.

You can make multiple payments for multiple students with the one cheque or credit card if you like. Just make sure all details are included and permission is forwarded.

Don't forget that you can also pay online. However, signed permission envelopes are still required to go to the teacher for excursion. Just mark on it that you paid online.

Please also be aware that when using the Westpac Parent Online Payment system, all payments processed after 6pm will not be seen at the school until the second business day eg payments made after 6pm on Monday evening will be on the Westpac report on Wednesday morning, payments made after 6pm Friday will be seen on Tuesday morning.

Thank you for your cooperation.



BORROWED CLOTHING

From time to time students need to have a change of clothes during the day. The office holds a small amount of clothing which we lend to the students.

If your child has come home with different clothes and a note from us, please wash the items and return them to the school office, or classroom, as soon as possible so they will be available for use again.

To assist with this process it would be helpful if Kindy parents packed spare underwear in their child's school bag.

Thank you

New South Wales
N Scale Group^{inc.}



LayoutFest 2017
5+ Layouts on display
Saturday December 2nd, 12-4pm
School Hall, Berowra Public School

We invite you to an exclusive exhibition for the parents and students of Berowra Public School. Entry by Gold Coin Donation with all proceeds going towards new equipment for the school. Check out our website for a preview of some of the layouts - www.nswnsg.org.au



www.facebook.com/nswnsg

LEARN TO SWIM

IN THE CHRISTMAS SCHOOL HOLIDAYS!



INDOOR HEATED POOL

LESSONS FOR PRIMARY AGED
CHILDREN, PRESCHOOLERS AND BABIES

Holiday Courses – 4 & 5 day courses start
Mon 18 Dec & 2, 8, 15, 22 Jan
Also Saturday classes in January
TERM 1 STARTS MON 29 JANUARY 2018

TURRAMURRA LEARN TO SWIM

PHONE 9489 4771

48 TENNYSON AVE, TURRAMURRA

turramurralearntoswim.com.au

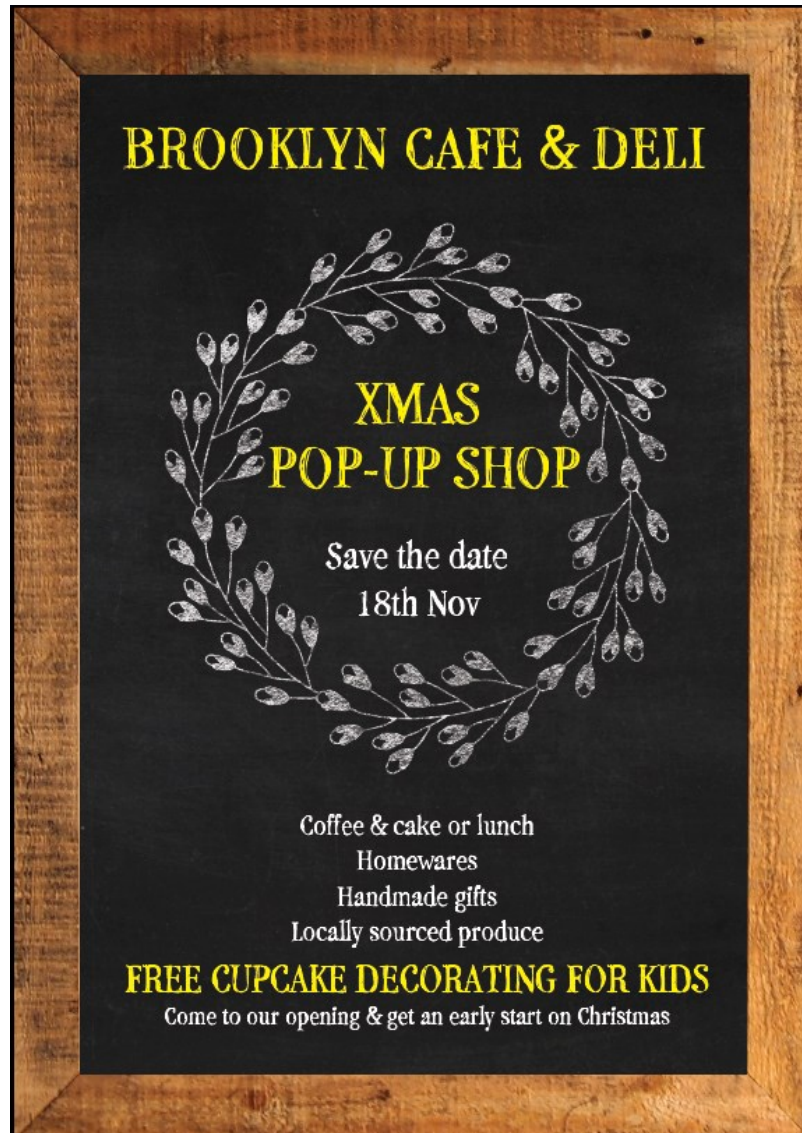
BOOK NOW FOR HOLIDAYS and TERM 1



MOBILE PHONES AT SCHOOL

Parents and students are reminded that mobile phones are not to be brought to school except in exceptional circumstances.

Then the mobile phone must be left at the school office before school and collected at the end of the school day.



212 Brooklyn Rd, just up from the hotel
Parking opposite



Carols under the Star

A combined churches of Berowra community event

Monday 18th December 2017
Warrina Street Oval

Starts at 6pm

Colouring Competition for all primary school children
Prizes to win

See back page of newsletter.

Canteen Volunteers urgently needed

Any amount of time on a Wednesday, Thursday or Friday that you can spare would be greatly appreciated. Lunch provided.

Call Teresa on 0402 855 941, see her in the canteen any Wednesday, Thursday or Friday between 9.00am - 2.30pm or leave your details at the office.

THE ATHLETE'S FOOT HORNSBY

REWARDS PROGRAM IS A PROUD
SUPPORTER OF BEROWRA PS

The School Rewards Program is a great fundraising opportunity with \$5 from every pair of shoes purchased being donated back to your school. This applies to the whole family across our fantastic range of school, sports, work and casual shoes. Ask one of our friendly staff in store for more details.

\$5 FROM EVERY PAIR OF SHOES
PURCHASED IS DONATED
BACK TO YOUR SCHOOL



LOWER GROUND FLOOR
WESTFIELD SHOPPINGTOWN

Disclaimer: Advertisements placed in THE CREST do not reflect an endorsement or otherwise by Berowra Public School of that product or service. Information in the advertisement is entirely the responsibility of the advertiser.

**Education**
Public Schools



OWN THE MOMENT

**FRIDAY
24 NOVEMBER**
11.00AM MATINEE
7.30PM PERFORMANCE

**SATURDAY
25 NOVEMBER**
1.00PM MATINEE
7.00PM PERFORMANCE



TICKETEX
TICKETS AVAILABLE FROM TICKETEX.COM.AU OR CALL 132 849
PLUS ALL OUTLETS WWW.SCHOOLSPECTACULAR.COM.AU

**QUDOS
BANK ARENA
SYDNEY OLYMPIC PARK**

PRINCIPAL SPONSOR


IN ASSOCIATION WITH
 

BROADCAST PARTNER


VENUE PARTNER


SCHOOL ZONE ROAD SAFETY in the Hornsby Shire

Parking is a limited resource around our schools these days. Schools are growing in size as our city expands. Traffic congestion is getting worse around schools during peak periods. While we can no longer provide parking for every parent that wants to park near a school, we can, with your help, manage access safely and equitably. Road safety improves, and complaints are reduced when school staff, parents, Council, Police and the RMS collaborate together to manage this effectively. Now is the time to make some changes by delivering alternative, sustainable and safe travel solutions for your school community.

Construction Zones around schools

Over the course of the coming year pupils walking to school may be effected by construction activity relating to road works or development on private land. Council may be able to assist with planning alternative routes or limiting work during school travel peak periods.



HOME

Children's Crossings

Children's Crossings are legal pedestrian crossings only when the orange flags are displayed in the school zone, morning and afternoon peak periods.

KIDS CROSSING



SCHOOL

Are drivers unaware of the road rules in your school zone?

Educate them with Council's FREE school zone road safety information. Available in English, Chinese and Korean languages.

SCHOOL ZONES

40



TOO MANY CARS

Too many cars? Not enough parking?

Have you thought of running an organised set-down or pick-up program at your school. Request a copy of the Schools Travel Ideas guide to find out more.

Getting complaint's about access to your school and don't know what to do?

Contact Council's Road Safety Officer by phone on 9847 6616 or email: trafficbranch@hornsby.nsw.gov.au

ACCESS TO SCHOOL



Tired of repeat parking offenders?

Councils traffic ranger patrols in school zones are based on a rostered system which runs per school term. For increased ranger patrols or to request our on call ranger, contact the Council's ranger coordinator by phoning 9847 6616 or email trafficbranch@hornsby.nsw.gov.au

TWILIGHT CHRISTMAS MARKET

Thursday 7th December
5:30 - 8:30pm
Turramurra High School,
Maxwell Street Turramurra

*Stunning jewellery, handmade cards,
delicious Christmas delicacies, french
homewares, unique gifts, Arcadian
Artists stalls and many more!*

ENTRY: GOLD COIN DONATION

turramurrahighschool.com.au





Office Use Only

Date Received

Instrument Allocated

Instrument Number

BAND PROGRAM ENROLMENT 2018

PLEASE RETURN BY 21st NOV 2017

STUDENT'S LAST NAME _____ **CLASS** _____

STUDENT'S FIRST NAME _____ **Date of Birth** _____

MOTHER'S NAME _____ **FATHER'S NAME** _____

MAILING ADDRESS _____

TELEPHONE NUMBER _____ **MOBILE** _____

E-MAIL ADDRESS _____

INSTRUMENT CHOICE: **1ST CHOICE** _____

2ND CHOICE _____

3RD CHOICE _____

4TH CHOICE _____

5TH CHOICE _____

(Don't miss out by not listing choices – all instruments are fun to learn)!

Do you wish to hire an instrument ? **YES / NO**

Do you have an instrument at home? **YES / NO**

Please list instrument at home _____

PARENT/GUARDIAN SIGNATURE _____ **DATE** _____



Office Use Only

Date Received

Instrument Allocated

Instrument Number

STRING/RECORDER ENSEMBLE ENROLMENT 2018

STUDENT'S LAST NAME _____ CLASS _____

STUDENT'S FIRST NAME _____ Date of Birth _____

MOTHER'S NAME _____ FATHER'S NAME _____

MAILING ADDRESS _____

TELEPHONE NUMBER _____ MOBILE _____

E-MAIL ADDRESS _____

INSTRUMENT CHOICE: 1ST CHOICE _____

2ND CHOICE _____

DO YOU WISH TO HIRE AN INSTRUMENT? YES / NO

ADDITIONAL COMMENTS _____

PARENT/GUARDIAN SIGNATURE _____ DATE _____

Berowra Public School String/Recorder Program



Berowra Public School Music Program

The School Music Program at Berowra PS includes a *Training Band, Concert Band, Recorder Ensembles, String Ensemble* and *Rock Band*. As part of the *BPS Music Program*, the above groups are **extra- curricular activities** organised by the *P&C Music Committee*, and supported by *Berowra Public School*.

The program for the *Training Band, Concert Band, String Ensemble* and *Rock Band* gives students the opportunity to play a musical instrument together in an ensemble. The program for the Bands and Strings does not provide 1 on 1 music lessons but an avenue for students to play in an ensemble with their peers.

Why Play a Musical Instrument?

Music affects the brain in many positive ways. It makes you smarter, happier and more productive at any age. Listening is good, playing is even better.

Playing music in an ensemble not only encourages team work but is scientifically proven to help improve brain function. Children with musical training are shown to do better in subjects like language, reading, and maths and have better fine motor skills than their non-musical classmates. Not only this but it's great fun!

Learning a Musical Instrument at Berowra

Students who would like to join the *Bands* or *String Ensemble* are required to have an instrumental lesson each week. The *Music Program* can provide a list of teachers in the area that parents can contact to organise weekly lessons.

Weekly instrumental lessons provide students with the skills they will need to play in an ensemble, teachers give practical lessons, teaching children how to read music, the fingerings for their particular instrument. Band/ensemble music can be taken to lessons to work on with teachers. Learning to play a musical instrument is great fun but it isn't always easy. Regular tuition and private practice are both key ingredients for success.

Students who wish to learn Recorder learn to play and read music in a group setting. See below for further information.

Instrument Practice - Parents involvement in the musical experience is essential for children to develop their skills. A young child's musical development is like starting to learn to read and write, a little practice each day helps to improve your child's skill development. Your teacher will be able to give you some methods to help your child practice each week and enjoy their newfound skills.

Private Lesson Costs

The cost of instrument tuition can vary and largely depends on a tutor's experience. You can expect \$30-\$35 for a private lesson. Group lessons are approx. \$16-\$20

ENSEMBLES AT BEROWRA PUBLIC SCHOOL

The Band Program caters for students in Years 3–6. Beginner students start in the Training Band and progress to Concert Band as their skill develops. Students are not taught how to play their particular instrument at Band rehearsal but are encouraged to build on what they have learnt in their lesson times and learn to play as a team. Students are given opportunities to perform throughout the year and at events such as Easter Hat Parade, Kindy Orientation, Presentation Day, MADD Night, Berowra Music Fest, Berowra Woodchop, School Fairs and Competitions

String Program caters for students from all K-6 providing the student is having a private instrumental lesson. Students are not taught how to play their particular instrument at String Ensemble rehearsals but are encouraged to build on what they have learnt in their lesson times and learn to play as a team. Students are

given opportunities to perform throughout the year and at events such as Opera House Concerts, Hornsby District Music Festival and various school events

Recorder Ensembles are offered to students from Year 1-6. *Recorder is taught to students in a group setting.* Students learn how to read music, how to play the recorder and are given opportunities to perform throughout the year and at events such as Opera House Concerts, Hornsby District Music Festival and various school events. Recorder Lessons are divided into 2 groups. Junior Ensemble (Beginners and 1st year players) Festival Ensemble is made up of students who have been playing for 2 years or more and are at an advanced level.

Rock Band is an auditioned group comprising singers, drums, guitars and keyboard. Rock Band is offered to students from Year 3-6. Students work on contemporary music with 2 experienced tutors and are given the opportunity to perform at a variety of events such as Berowra Woodchop, Westfield, Asquith Fun Day. Private lessons are also a requirement of joining the Rock Band. Rock Band is co-ordinated by Mike and Vanessa Gordon

Music Fees

Unfortunately, primary school music programs are not supported financially by the Department of Education. Music fees cover the cost of paying our Conductors and also help with the cost of sheet music, equipment and administration. BPS Music Committee is a non-profit organisation and every effort is made to keep band fees as low as possible. Music fees are payable twice a year, Term 1 & Term 3, this reduces administration for our volunteer Treasurer. The exception is Rock Band which is paid per Term. Current band fees are outlined below.

Fees are paid each Semester (Term 1 & Term 3)

<i>Concert Band</i>	- \$200 per Semester
<i>Training Band</i>	- \$200 per Semester
<i>String Ensemble</i>	- \$220 per Semester
<i>Junior Recorder</i>	- \$120 per Semester
<i>Festival Recorder</i>	- \$150 per Semester
<i>Rock Band</i>	- TBA

Other Costs

<i>Music Shirts</i>	- \$18 new (for Band and Festival Recorder Ensemble) - \$10 second hand
<i>Admin Fee</i>	- \$15 per Semester (\$30 per year) this fee is per family and only applicable once. Students may play in more than one group.
<i>Instrument Hire</i>	- \$100 per Semester

This extra fee is to help run our music program, employ our tutors, enter festivals and competitions, purchase music and equipment we require a fee to help keep the Music Program ticking over.

Rehearsals

Training Band	Friday	8:00am - 9:00am
Concert Band	Tuesday	8:00am - 9:00am
Junior Recorder	Tuesday	8:45am - 9:15am
Festival Recorder	Friday	8:00am - 9:00am
String Ensemble	Thursday	8:00am - 9:00am

Commitment to Music Groups - Joining the Music Program at Berowra is an important commitment and at times will take hard work and practice, but the rewards are worth the effort. We ask that once a student has committed to Band, Strings, or Recorder that they stick it out for 1 Semester. *If a student does not wish to continue we are unable to refund fees mid Semester.* If you wish to discontinue a full Semester notice needs to be given by email to the bpsband@hotmail.com. You will be liable for fees until the end of that Semester. (i.e Term 2 or Term 4) Instrument Hire will also discontinue at the end of the Semester and is not able to be refunded mid Semester. On discontinuation hired instruments need to be returned to the Instrument Co-Ordinator and marked off. For further info please contact Naomi Lewandoski bpsband@hotmail.com

Carols under the Star

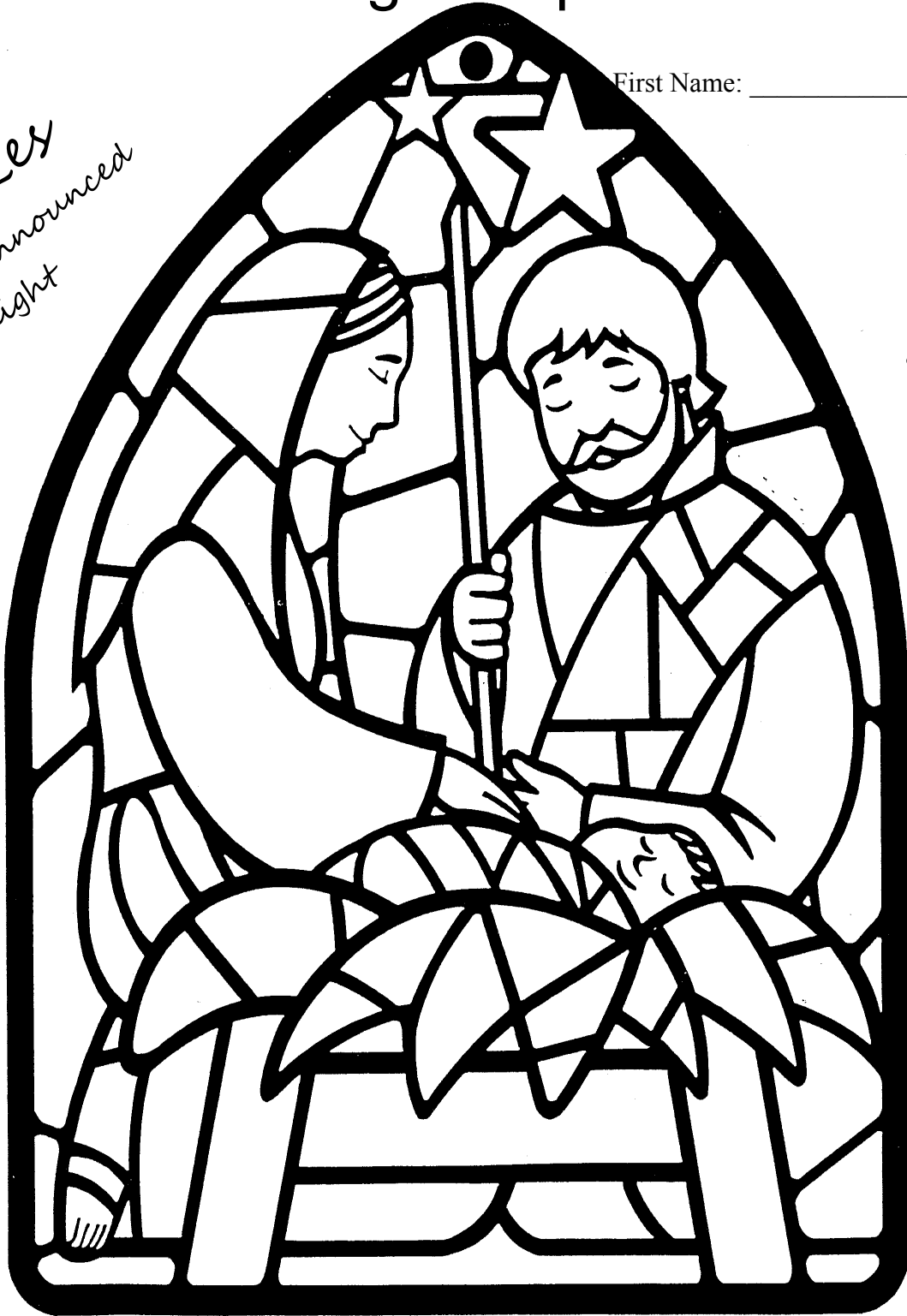
Monday 18th December 2017 Warrina Street Oval

Colouring Competition

First Name: _____

*Prizes
Winners announced
on the night*

*Events
start at
6 pm*



Cut here and glue to back - - - - -

Name : _____ Boy/Girl Contact no: _____

Age Group K-Year 2 ☐ Year 3-4 ☐ Year 5-6 ☐

Please return to the box in the office in your school by 8 December. Entries will be displayed in Bendigo Bank Window.