

# The Crest



Phone: 9456 1319

email: [berowra-p.school@det.nsw.edu.au](mailto:berowra-p.school@det.nsw.edu.au)

Facebook: <https://www.facebook.com/BerowraPublicSchool>

## **Term 4 Week 8 2 December 2020**

Dear Parents/Carers

### Grand Opening

Our playground equipment will be officially opened on Thursday Week 9.

The official ribbon cutting will take place at 9:20 and this will be followed by a Fun Day for our students who will be dressed in mufti. Students will enjoy a disco with a DJ and an ice-block, both supplied by our wonderful School Support group before being able to play on the equipment.

A huge THANK YOU to our fabulous P& C who donated \$20 000 to the cost of the equipment and who also applied for the shade sail grant and to the amazing School Support Group and canteen for helping our kids have some well-deserved fun.



This week the DoE released draft guidelines for schools for Term 1 in 2021. An update on the guidelines will be shared with the community before the end of the term.

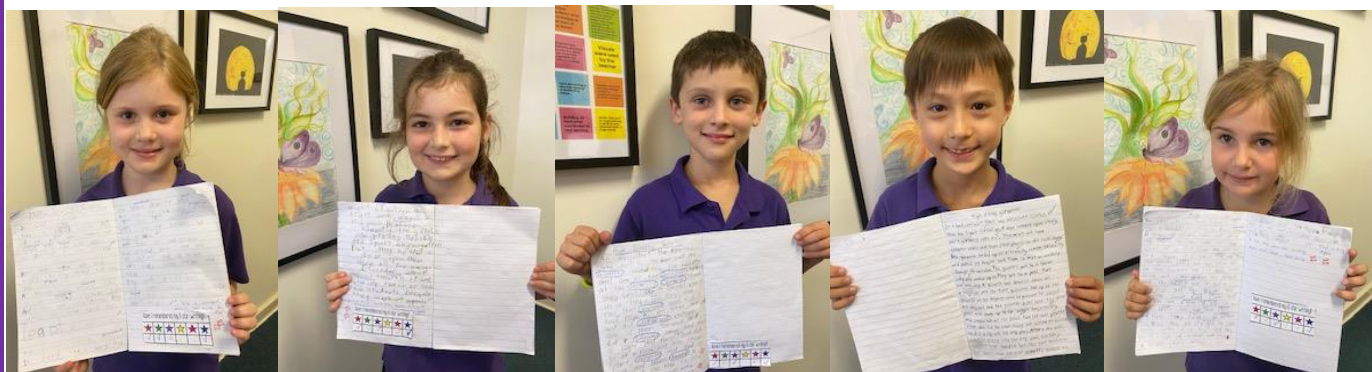
## Student Learning

Congratulations to BPS Rock Band who performed for our students at recess on Monday. They have worked extremely hard during the year and put on a very entertaining performance.



Stage 3 students shared some of their inquiry projects with me. They developed open ended questions about topics of interest to them, researched to find the answers and presented their findings. It was intriguing to hear from the students' perspectives and learn a range of different information as they shared their questions and findings.

Some very excited 2A students shared some of their descriptive writing. They were able to articulate how they use a star system in their writing to check to see if they have achieved their learning intention and success criteria. This is a fantastic way to make student learning visible and for students to be able to self-reflect on their own learning. Well done Mrs Withford and 2A!



## Teacher Learning

Mrs Liz Kempe and Ms Elky Roberts have completed 6 additional afternoon sessions of professional learning to train as our school Champions for the **Smiling Minds** program. This is a mindfulness program that the school is endeavouring to introduce in 2021 to further support student wellbeing.

***“Mindfulness is proven to lead to better attention, memory, regulation of emotions and self awareness. In turn, improvements in these areas can lead to reduced stress, anxiety and depression, better academic skills, social skills and self esteem.”***

Please follow the link to find out more information about Smiling Minds:

<https://www.smilingmind.com.au/about-us>

## School Planning

The school is well on the way to completing our Situational Analysis which will be used to develop our new School Improvement Plan 2021-2024.

A huge thanks to our parents and carers who completed the TELL survey, helped their children with the Homework Task of surveying their parents and to those parents who gave up their time to participate in our Zoom Parent Focus Groups.

We have gained valuable feedback which will be used to direct our future planning.

We have also gained valuable information and feedback from our students K-6 who completed a survey and from our Student Focus Groups.

Below are the most popular words students used to describe Berowra Public School.



At our most recent P & C meeting BPS shared survey results from our draft procedures and the 2020 Parent TELL Survey. A summary of the results are attached.

The parent feedback on our draft procedures represents 19% of our families, the teacher feedback on our draft procedures represents 91% of teaching staff and the 2020 Parent TELL survey results represent 22% of families.

As a result from the feedback received the following changes have been made:

- Parents receive a notification once their email has been passed onto the appropriate staff member.
- A flowchart for communication will be developed and shared with parents in 2021 as suggested by the P&C.
- The office staff organise the delivery of students to class when they are late arrivals and collection of students from class for early leavers.
- The tone of the BPS Visitors Procedures has been revised so that it reads in a more friendly and inclusive manner.

### **Presentation Day**

This year BPS Presentation Day will look a little bit different. Due to current COVID-safe guidelines we will be having separate Stage 3, Stage 2 and K-2 Presentation Day assemblies which will be attended by students and staff.

**Stage 3 - 9:30am-10:30am**

**Stage 2 - 10:30am-11:20am**

**K-2 - 12:00pm - 1:00pm**

A wonderful parent volunteer has offered to be our official photographer for the day, taking photographs of reward recipients which will later be shared to individual parents.

One family member for our 2021 leaders and Dux recipients will be able to attend the Presentation Day assembly.

A link to the livestream will be sent out to all families early next week so that our parents and carers can be part of the day too.

We welcome you to join the celebration via live stream and we hope that next year we can return to our traditional Presentation Day format so that you are able to join with us in celebrating our students' achievements in person.

### **School Cleaning**

Enhanced cleaning will continue in our school for the remainder of the year. This includes cleaning frequently touched areas and bathrooms after recess, as well as replenishing supplies such as soap. High touch surfaces such as picnic tables and handrails in the playground and door handles are also wiped with disinfectant.

## **Enrolments for 2021**

This is the time of the year when staff are planning ahead for next year. If your children are currently enrolled in K-5 and are not returning to BPS in 2021, please advise the school via email as changes to numbers will impact our class structures and planning for next year.

## **2021 Changes to School Development Days in 2021.**

Commencing at the start of 2021, the changes include:

- an increase from one to two SDDs at the commencement of Term 1
- a decrease from two to one SDDs at the end of Term 4.

## **The School Development Days are scheduled for the following dates:**

- **27 and 28 January, students return 29 January 2021.**

The two SDDs at the start of Term 1 are mandated and cannot be rescheduled. Principals may continue to vary SDDs that fall at the beginning of Terms 2 and 3, and at the end of Term 4.

There will be no changes to:

- the total number of SDDs – remaining at five days
- the length of the school year for staff or students (students will start and finish the school year one day later)
- SDDs occurring at the commencement of Terms 2 and 3.

## **School Security**

As you are aware vandalism has been an ongoing issue at our school site this year especially over the weekends. This is causing damage to our school property and is also a health and safety concern for our students, staff and visitors. If you notice or see any persons trespassing and acting suspiciously on the school grounds please contact Hornsby Police on 9476 9799 or the Police Assistance Line on 131444.

The security fence will remain around the equipment after school hours and during the school holidays, however BOOSH will have access to the equipment during vacation care times.

## **BOOSH Vacation Care**

BPS is extremely lucky to have our amazing BOOSH offering Vacation Care during the school holidays. Community access will be restricted to the school site during Vacation Care dates to ensure the safety of the children and staff attending BOOSH.

Kind regards

Vicky Wallace

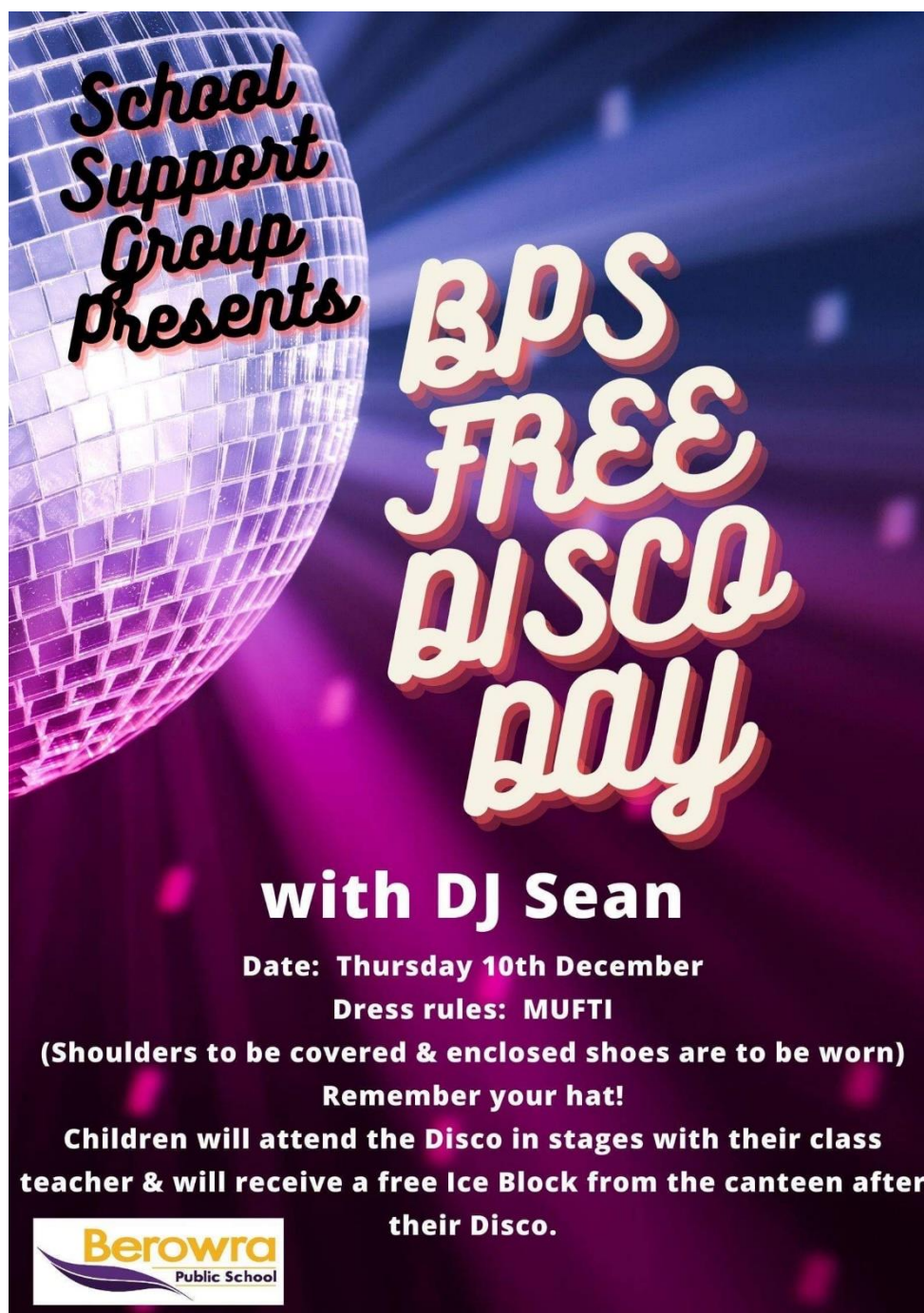
Principal

### Dance Performance

On Thursday 3<sup>rd</sup> December the classes will be performing the dances they have been learning with Mrs Lukic this term. Unfortunately, parents will not be able to attend so the performances will be videoed and shared on their Seesaw class pages. These will be uploaded after school on Thursday. The students in K-2 will wear mufti clothes for the day. Each class has been asked to wear specific coloured clothes to match their dance. Please remember to bring their school hat and wear enclosed shoes.

### Berowra's Got Talent

On Tuesday 15<sup>th</sup> December students in Years 3-6 have been invited to perform in the Berowra's Got Talent show. This will be held in our school hall. Students will be able to view the show in their stages and via Zoom. **Auditions will be held on Tuesday 8<sup>th</sup> December, students must bring their instrument, props and/or music on a USB labelled with their name on this day.**



*School Support Group Presents*

**BPS  
FREE  
DISCO  
DAY**

**with DJ Sean**

**Date: Thursday 10th December**

**Dress rules: MUFTI**

**(Shoulders to be covered & enclosed shoes are to be worn)**

**Remember your hat!**

**Children will attend the Disco in stages with their class teacher & will receive a free Ice Block from the canteen after their Disco.**

**Berowra**  
Public School

# Health and Safety is everyone's Responsibility

Our P&C has purchased accident insurance for students who are injured as a result of a serious incident at school. Information is available at the office.

**Accident & Health International**  
Underwriting Pty Limited



**Covid-19 Update** Berowra Public School is continuing to follow DoE and NSW Health advice to help manage the spread of viruses and we will continue to keep the community informed as we are provided updates.



1. **Wash your hands** regularly and thoroughly.
2. **Sneeze into your elbow** or a tissue, disposing of the tissue straight away and then washing your hands.
3. **Stay home if you are unwell** and in schools, send home staff or students who show **signs** of being unwell through the day.

Please be aware that along with DoE and health guidelines students are continuing to regularly wash their hands at school.

The school is supplied with liquid soap for use by staff and students (available in the toilets and every classroom). We receive the liquid soap supplies in bulk. The soap in the toilets is checked and refilled twice a day and teachers refill pump bottles for the classroom as required.

## Road Safety



Bicycle lane



Bicycle lane

A bicycle or scooter rider must always give way to other pedestrians when riding along a footpath.

# Attendance

Students should be at school unless:

- they have a medical certificate which states that they are unable to return to school due to an ongoing medical condition and the expected timeframe
- they are currently unwell.

In accordance with advice from NSW Health, parents and carers are reminded **not** to send children to school if they are unwell, even if they have the mildest flu-like symptoms.

NSW Health have requested that schools encourage anyone who is unwell or has even mild flu-like symptoms, to arrange to be tested through their local medical practitioner or one of the COVID-19 clinics.

Students and staff with flu-like symptoms need to be tested and provide a copy of a negative COVID-19 test result and be symptom free before being permitted to return to school.

Students who do not undertake a COVID-19 test result will not be permitted to return to school for a 10 day period. Additionally they must be symptom-free for at least 3 days before returning to school.

Students who have seasonal allergic rhinitis or another condition that presents similarly to flu-like symptoms are still required to get tested for COVID-19 and return a negative test result. Where their symptoms continue beyond 10 days, students should provide documentation from their GP confirming their symptoms are typical for their condition.

Schools are not required to conduct widespread temperature screening or mandate the wearing of a mask.

## **Recording absences, medical certificates and case management**

If a student is absent for more than three days without a medical certificate, this will be recorded as unauthorised absence and followed up by the school.

Our primary concern is the wellbeing and safety of the students in our care.

## **Lost Property**

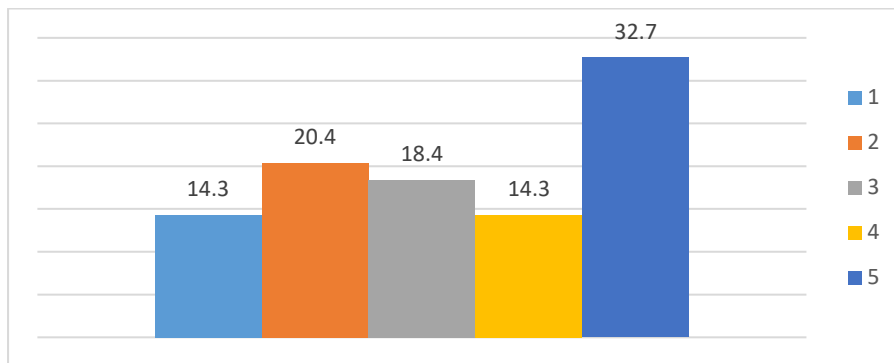
Please make sure all items of clothing, drink bottles and lunch boxes are clearly labelled with your child's name so they can be returned if they are lost.

Upcoming Events		
<b>Week 9</b>	Wednesday 9 December Stage 3 at 9:30am Stage 2 10:30am K-2 12:00pm	Presentation Day
<b>Week 9</b>	Thursday 10 December	Playground equipment official opening & Fun Day with DJ and ice-blocks supplied by School Support Group
<b>Week 9</b>	Friday 11 December	Stage 3 Mini Fete
<b>Week 9</b>	Friday 11 December	Semester 2 Student reports sent home
<b>Week 10</b>	Monday 14 December	Year 6 Farewell
<b>Week 10</b>	Tuesday 15 December	Berowra's Got Talent
<b>Week 10</b>	Wednesday 16 December	Last day of school for students
<b>Week 10</b>	Thursday 17 December	Last day of school for teaching staff
<b>Week 10</b>	Friday 18 December	Last day of school for SASS staff
<b>Term 1 Week 1 2021</b>	Wednesday 27 January 2021	School Development Day (Teachers only)
<b>Term 1 Week 1 2021</b>	Thursday 28 January 2021	School Development Day (Teachers only)
<b>Term 1 Week 1 2021</b>	Friday 29 January 2021	Students 1-6 return to school (Students will be in 2020 class groups for the day)  Kindy Best Start Assessment
<b>Term 1 Week 2 2021</b>	Monday 1 February 2021	Students 1-6 in new 2021 classes  Kindy Best Start Assessment
<b>Term 1 Week 2 2021</b>	Tuesday 2 February 2021	Kindy Best Start Assessment
<b>Term 1 Week 2 2021</b>	Wednesday 3 February 2021	2021 Kindy Students start School

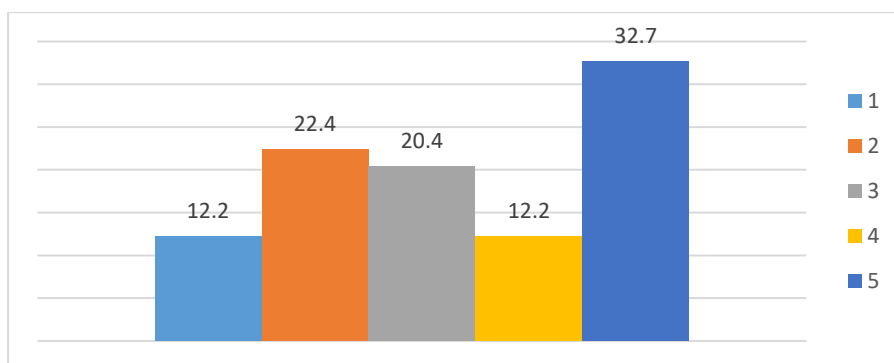
## Berowra Public School Community Survey - Draft Procedures 2020

(1 = Poor and 5 = Outstanding)

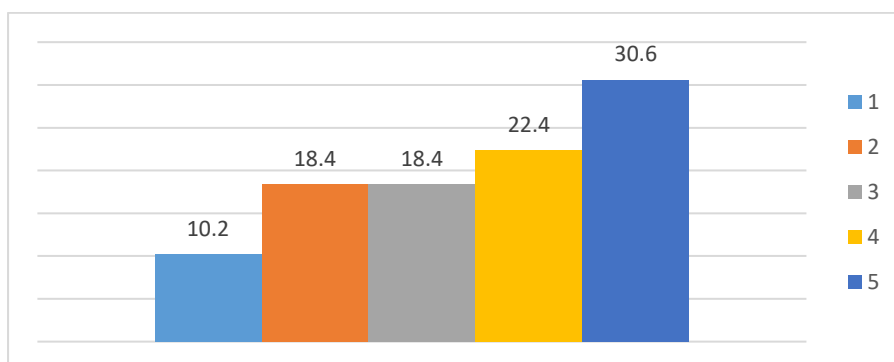
a. How clear is the purpose of the BPS Parent Communication Procedures?



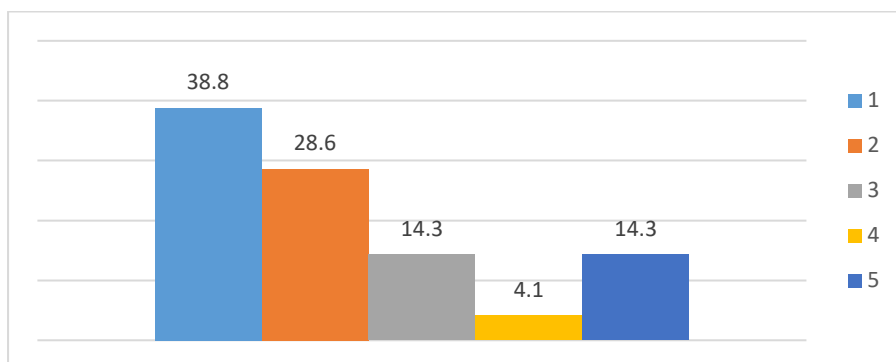
b. How clear are the aims of the BPS Parent Communication Procedures?



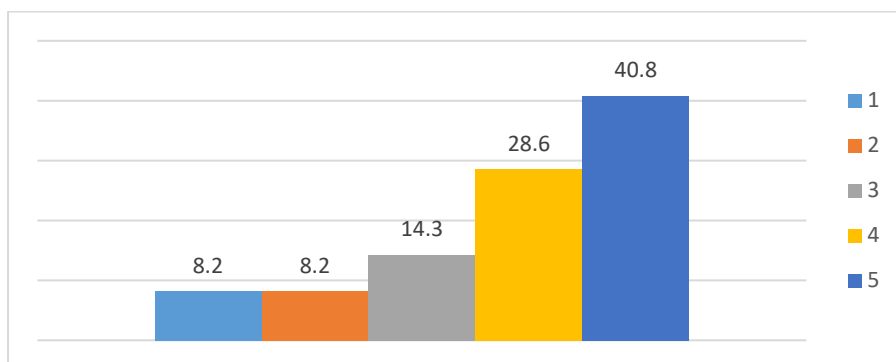
c. Are the BPS Parent Communication Procedures clear and easy to understand?



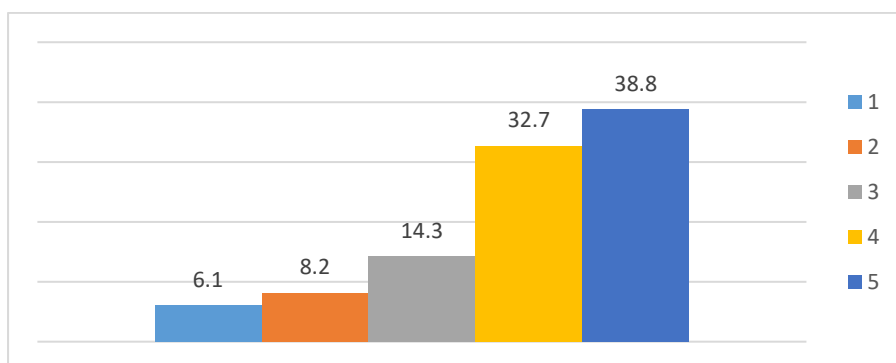
d. How fair and equitable are the BPS Parent Communication Procedures?



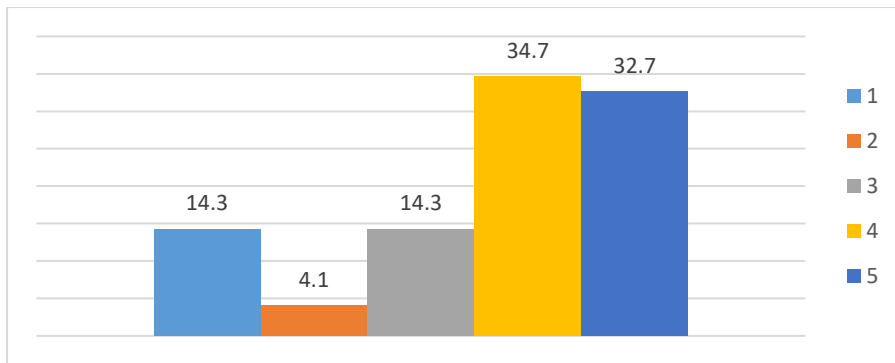
e. How clear are the aims of the BPS Visitor Procedures?



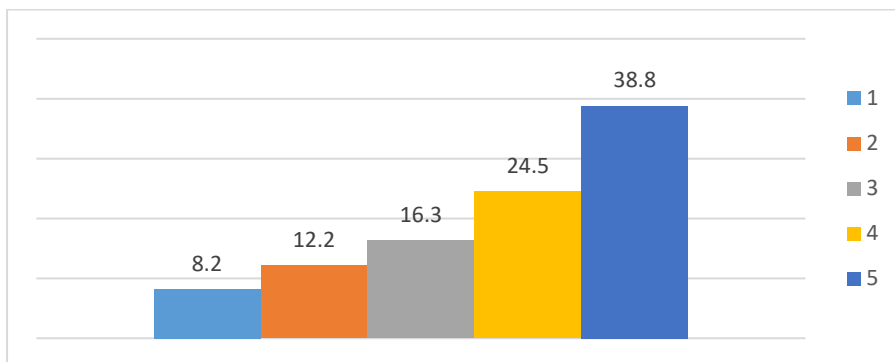
f. Are the BPS Visitor Procedures clear and easy to understand?



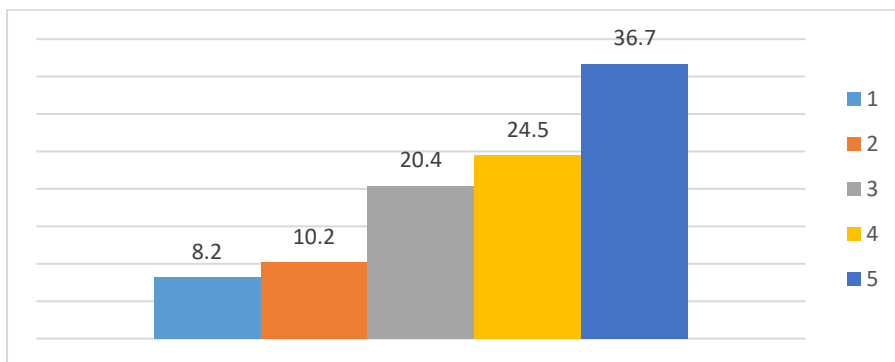
g. How fair and equitable are the BPS Visitor Procedures?



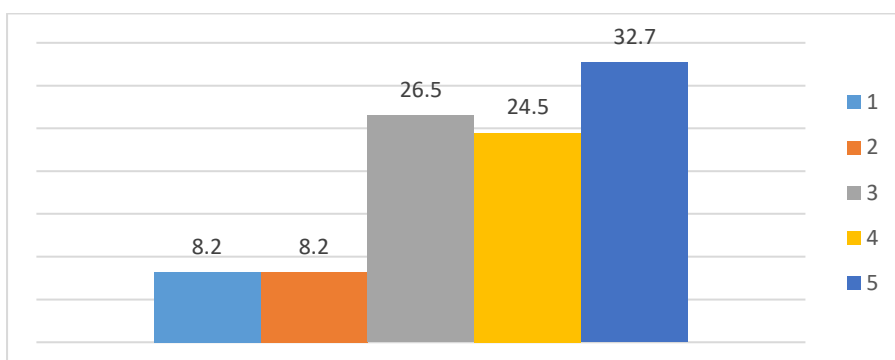
h. How clear are the aims of the BPS Behaviour Management Procedures?



i. Are the BPS Behaviour Management Procedures clear and easy to understand?



j. How fair and equitable are BPS Behaviour Management Procedures?



49 responses.

### **BPS Parent Communication Procedures**

Delayed response in communicating with the teachers

Privacy is a concern

Difficult for parents who work

Good to get a read receipt from the office to acknowledge the email has been received and forwarded to the appropriate person

What to do if your child is sick

It's clear and concise no grey areas

I understand some parents was direct email to teachers but sometimes there needs to be that buffer and teachers can become inundated with unnecessary emails

I see that the new procedures allow teachers to keep a correct record of all communication which is good

### **BPS Visitor Procedures**

Parents wandering around the playground to collected children from class for early pick up

Adjust access to school grounds drop off and pick up times

Tone of the policy makes visitors/parents feel unwelcome

Safety for our kids

Where do visitor use the bathroom?

Safety of the children is paramount and this procedure clearly seeks to provide guidance to visitors of the school and how they are to engage

### **BPS Behaviour Management Procedures**

Consistency in implementation is needed

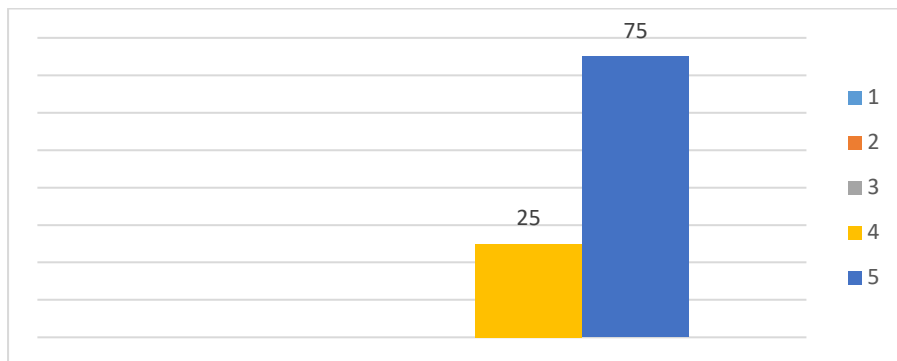
May need to provide some clarification around the Reflection Room – what it is, where it is, what students do there and who supervises it

Ensure casual teachers are aware of the procedures like the whole school approach

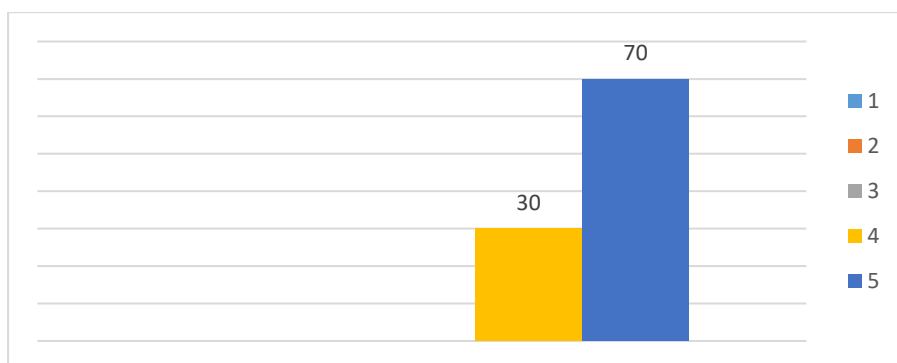
Management of behaviour has a clear process and children and staff are all on the same page

## Berowra Public School Teacher Survey - Draft Procedures 2020

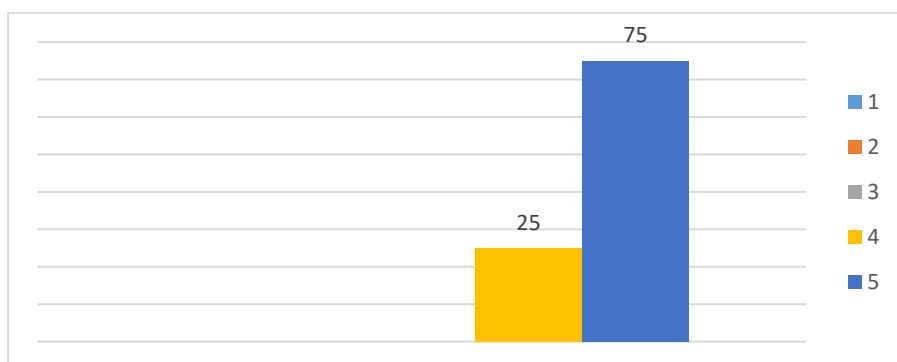
a. How clear is the purpose of the BPS Parent Communication Procedures?



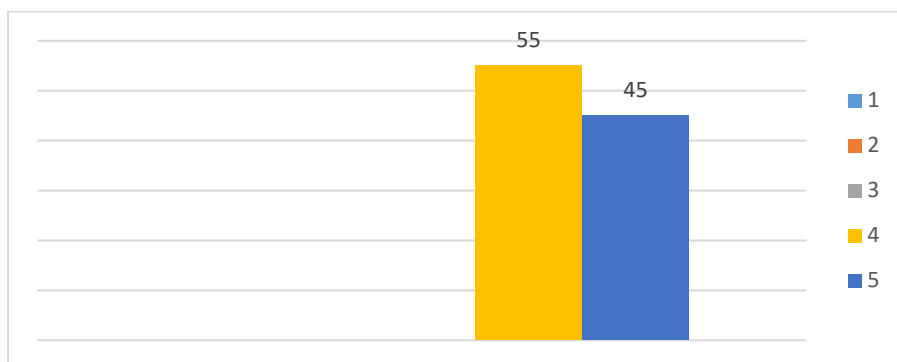
b. How clear are the aims of the BPS Parent Communication Procedures?



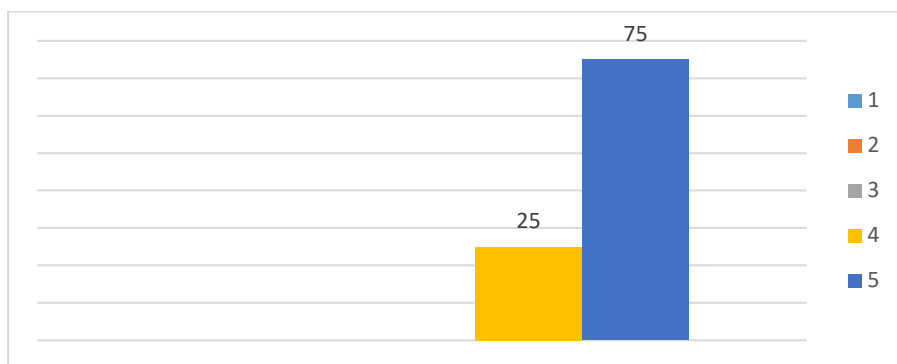
c. Are the BPS Parent Communication Procedures clear and easy to understand?



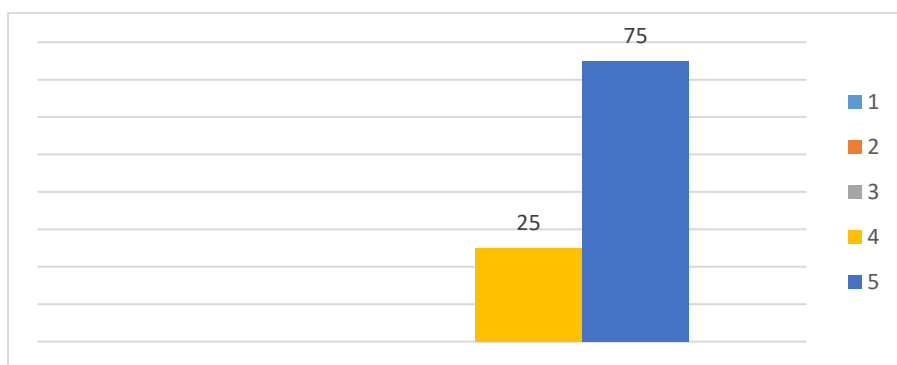
d. How fair and equitable are the BPS Parent Communication Procedures?



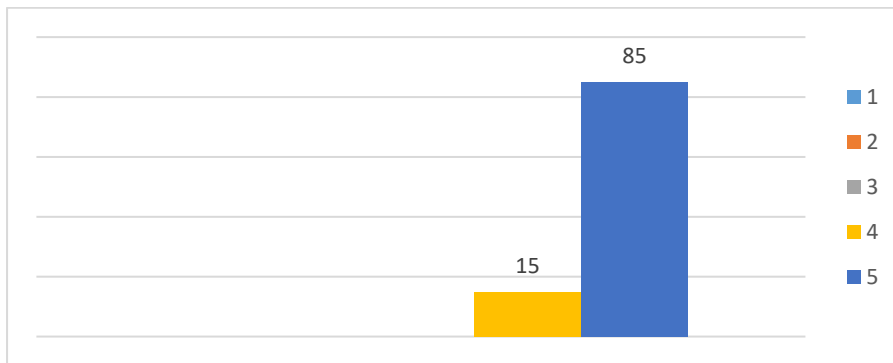
e. How clear are the aims of the BPS Visitor Procedures?



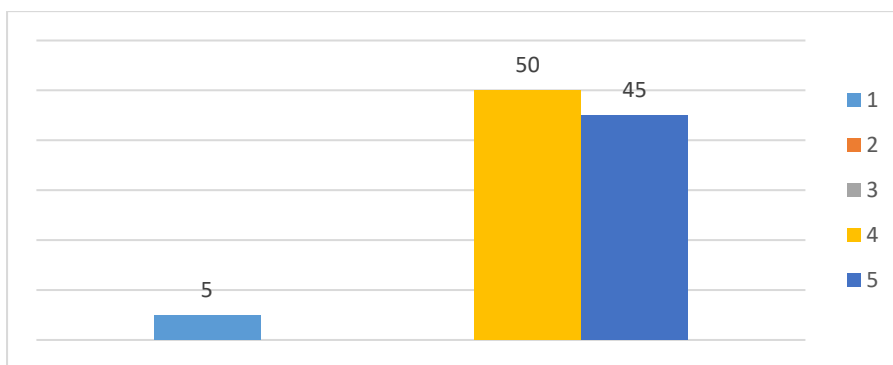
f. Are the BPS Visitor Procedures clear and easy to understand?



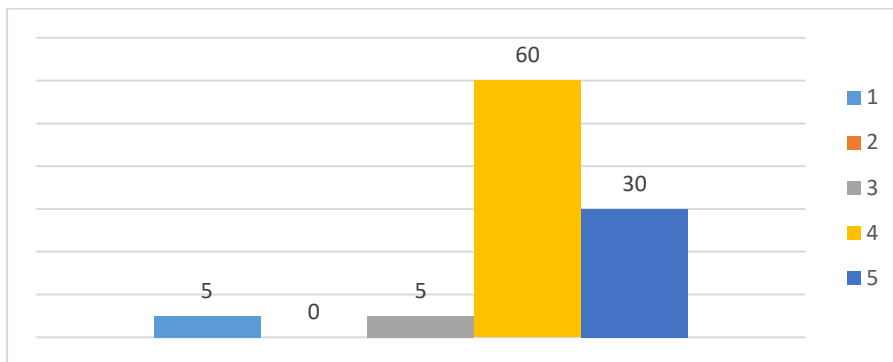
g. How fair and equitable are the BPS Visitor Procedures?



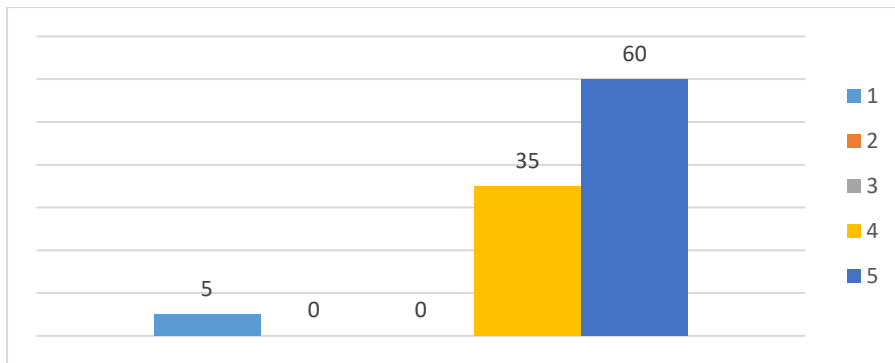
h. How clear are the aims of the BPS Behaviour Management Procedures?



i. Are the BPS Behaviour Management Procedures clear and easy to understand?



j. How fair and equitable are BPS Behaviour Management Procedures?



20 responses.

### **BPS Teacher Communication Procedures**

The recording of communication is very helpful

I found it difficult to adapt to the changes. However now feel like I don't have to check my work emails from parents on a Sunday afternoon

I think it lays a clear foundation for professional communication with the parents that is consistent across the school

### **BPS Teacher Visitor Procedures**

I love that all visitors must come to the front office. It makes the routine easy to understand for all

Everyone know the procedures and the bottom line is that the children and staff are released form interruptions and are kept safe

Visitors know our expectations and the safety of our staff and students is thought of

### **BPS Behaviour Management Procedures**

Like how all teachers are on the same page regarding behaviour and how the parents are on the same page as well

The universal and fair system of behaviour management...student learning remains a priority

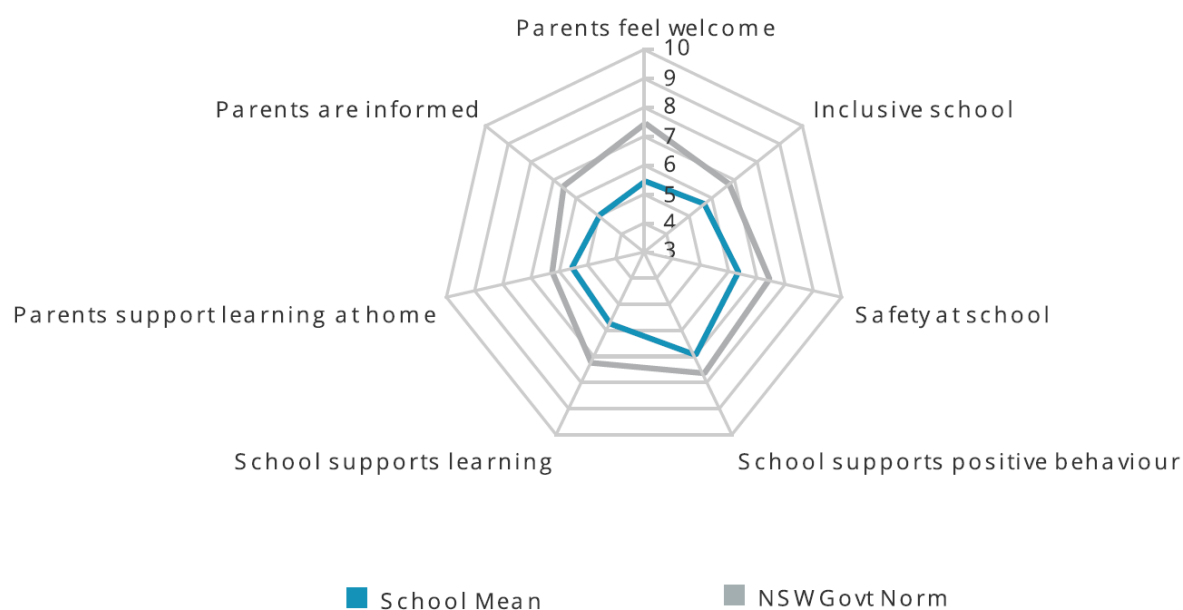
The whole school has the same expectation/understanding – consistency is key

Making sure minor incidents are not confused with trivial ones

Not sure if behaviour slips are needed for minors as they go on Sentral

## Berowra Public School TELL Parent Survey Summary – 2020

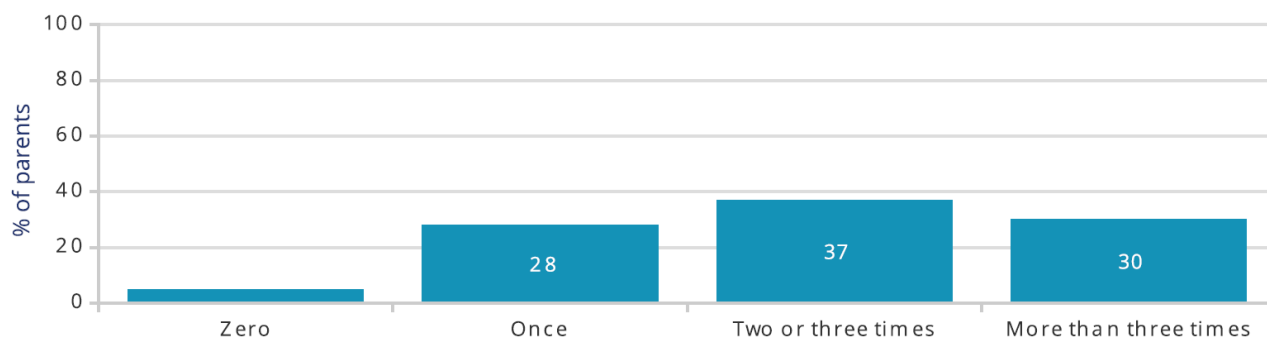
This report provides results based on data from 57 respondents in this school who completed the Parent Survey between 19 Oct 2020 and 23 Oct 2020.



### Parents' Participation at School

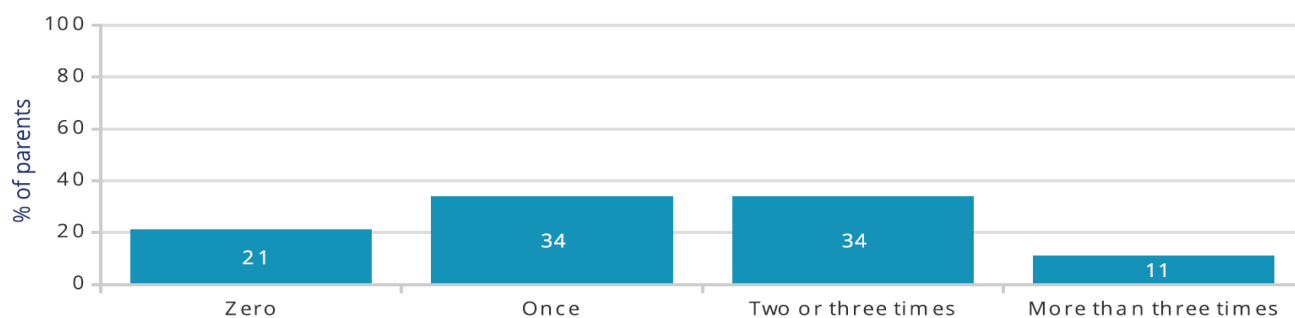
#### Parents talked with a teacher

Since the beginning of the school year, how often have you talked with a teacher about your child's learning or behaviour?



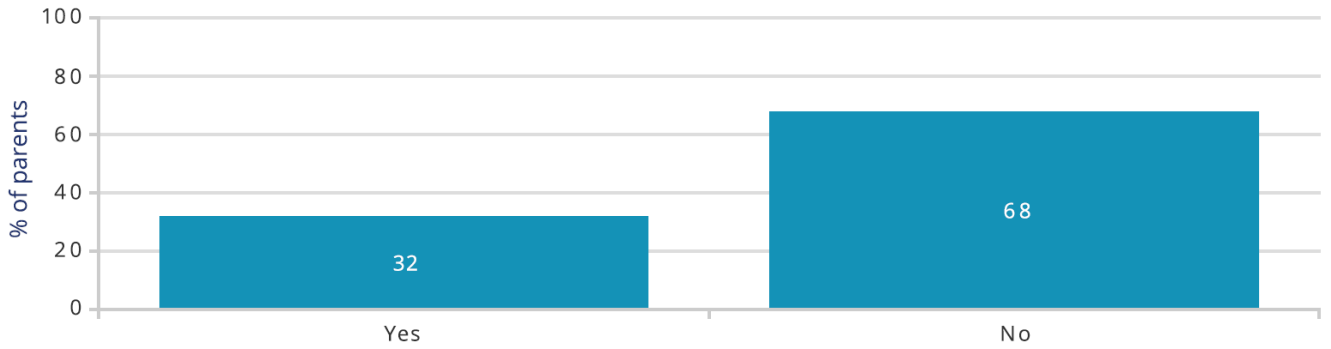
#### Parents attended meetings

Since the beginning of the school year, how often have you attended meetings (e.g., parent-teacher meetings) or social functions at your school?



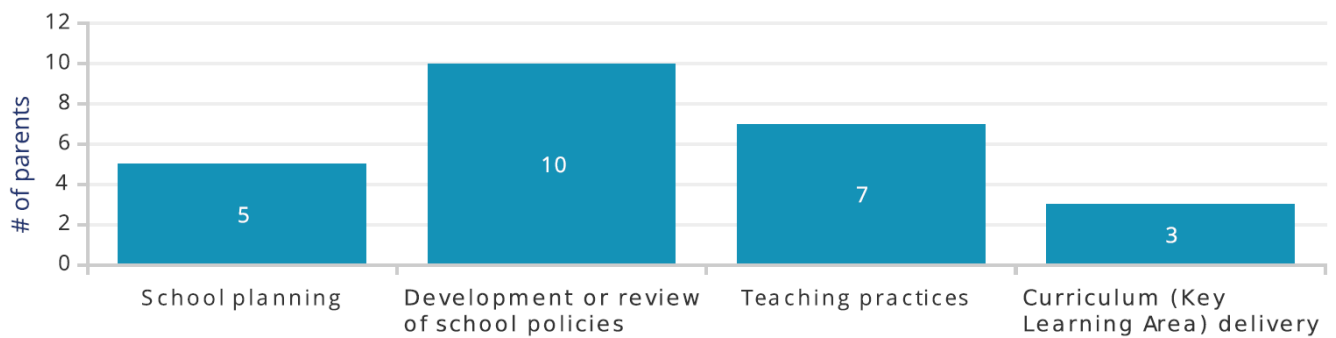
## Parents involved in school committees

Are you involved in any school committees (for instance, the P&C)?



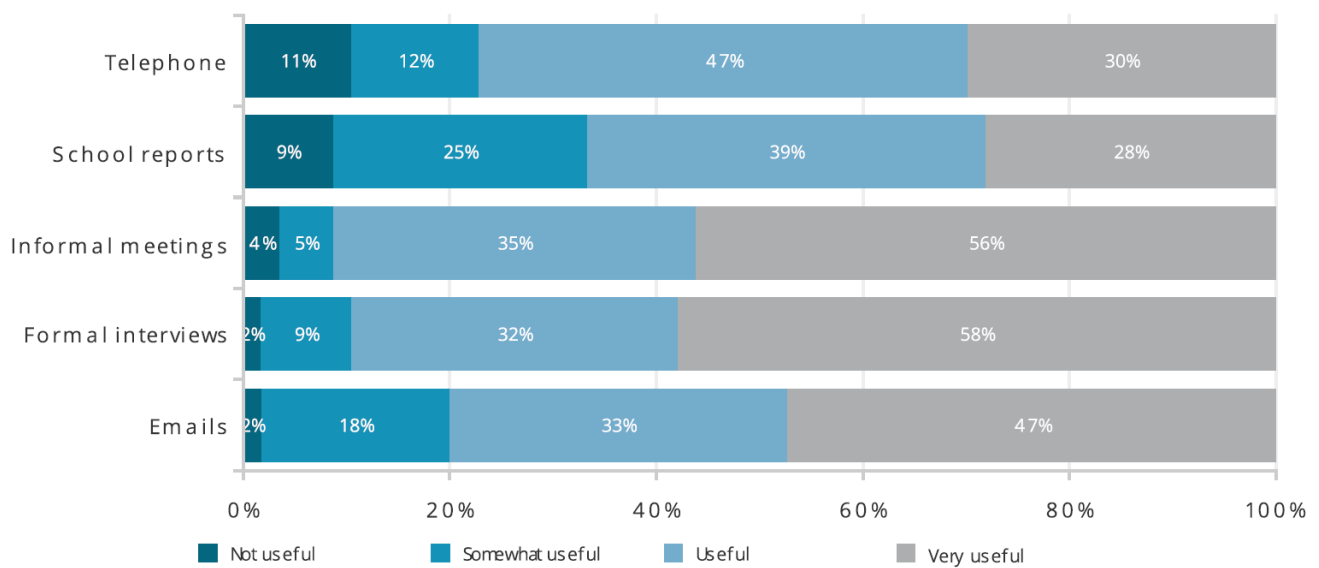
## Parent Input

Has the school sought your input into, or opinions about: (please tick all that apply)



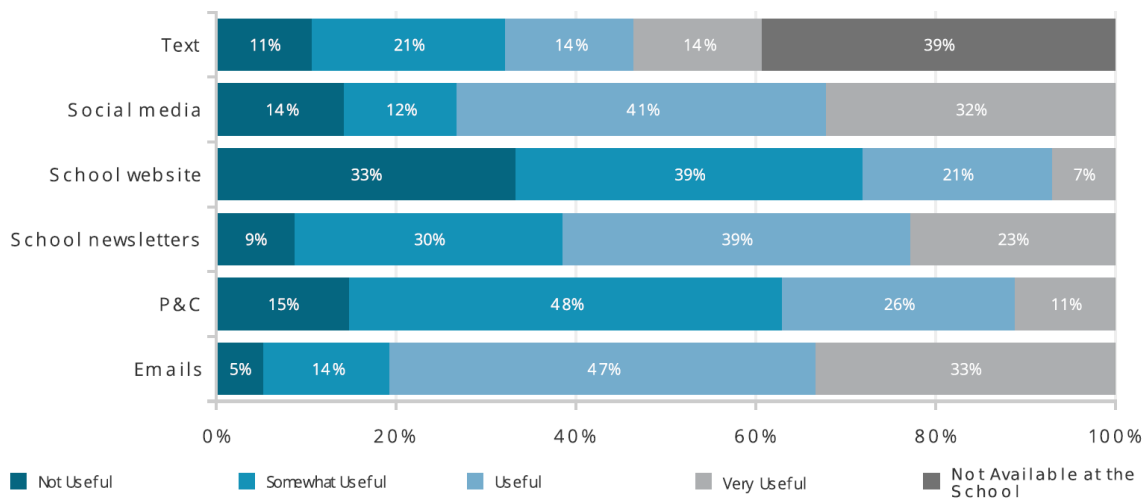
## Useful communication types at school

Please tell us how useful you think the following types of communication are when discussing your child with the school.



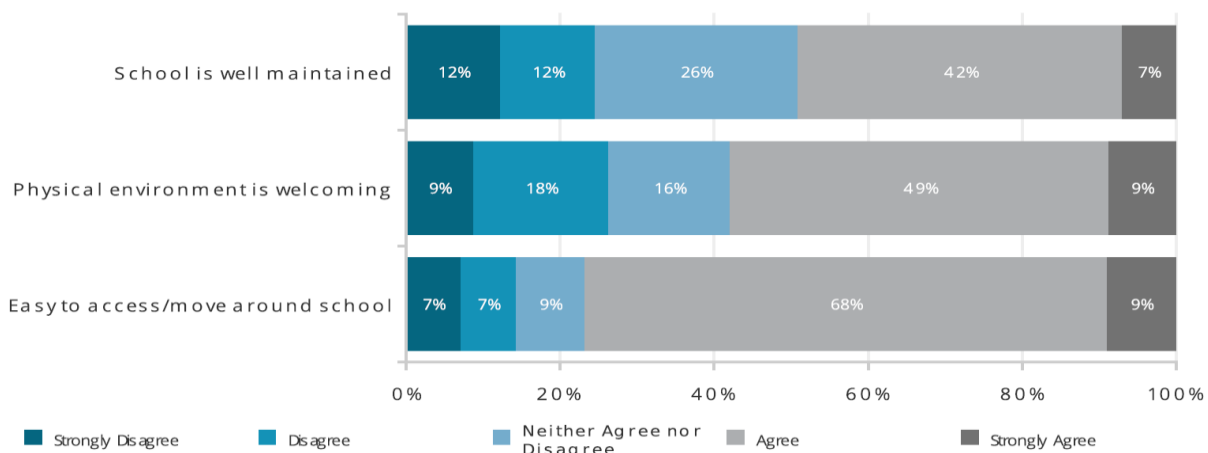
## Useful communication about school news

Please tell us how useful you think the following types of communication are for finding out news about the school.



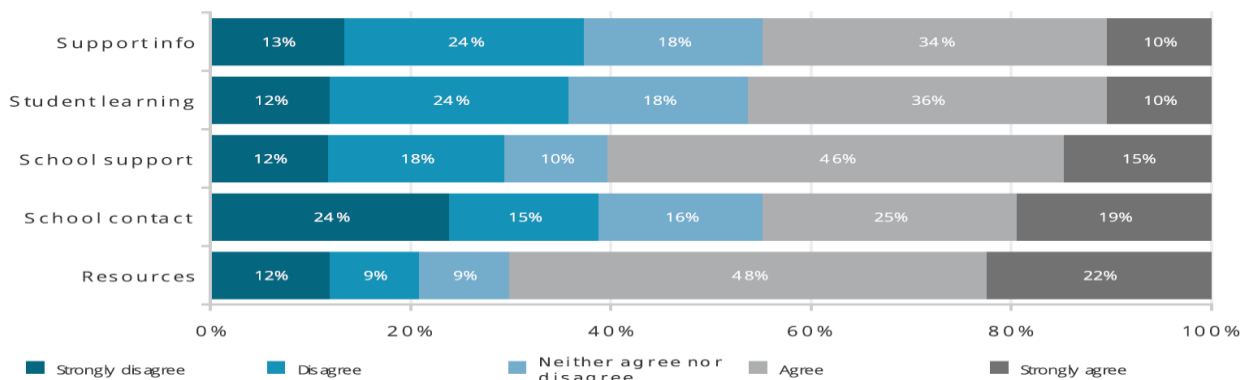
## Perception of school facilities

How strongly do you agree with each of the statements:



## Experiences of learning from home

How strongly do you agree with each of the statements:



## Update:

The refillable drink stations have been approved and fingers crossed these will be installed by the start of the school year in 2021!

The P&C would like to thank the Canteen for funding this initiative!



## Congratulations

to the winners of our refillable drink station artwork competition:

**Micah Chapman**

K-2

**Ruby Barton**

3-6



We look forward to seeing your amazing artwork on the refillable drink stations once they are installed. Thank you to all those children who submitted an entry.

## Canteen:

The Canteen could always use your help! If you are interested in volunteering your time in the canteen – please contact the Canteen or sign up directly via <https://signup.com/go/wjCbqT>

Volunteers must have a working with children's check and sign the visitor acknowledgement form located in the Office upon arrival

### December Birthdays...

**Don't forget to order your Birthday Buckets!**

For your child's birthday, order a bucket of ice blocks.



These will be delivered to their classroom for the whole class to enjoy!

Order prior to the day via Flexischools.

Should you wish to contact us please do so by calling the school office on 9456 1319 or via email [canteen@bps.org.au](mailto:canteen@bps.org.au)

## Uniform Shop:



Last date for Shopify orders will be **Tuesday 8<sup>th</sup> December**. Orders after this date will not be filled until Term 1, 2021

Order



here:

<https://berowra-public-school-uniform-shop.myshopify.com/>

Orders are processed weekly; you will receive an email when your order is ready for collection.

Collection will be on a Wednesday afternoon between 3.10pm to 3.30pm outside the Office.

Have questions or require further information – contact us via email [uniform.shop@bps.org.au](mailto:uniform.shop@bps.org.au)

## Banking:



Tuesday – 8.50am to 9.20am @ The Canteen

Ensure banking slips are filled out correctly with the Child's Name, Unique Student No, the date and \$ amount being deposited.

Two authorised parent volunteers will complete the banking. Parents can wait at the school gate to collect their child's banking deposit book at the completion of banking.

\*This procedure will remain in place until further notice



BPS Music  
[music.bps.org.au](http://music.bps.org.au)



# BPS Music Program 2021

If you are interested in joining any of our groups in 2021,  
please register at

**[www.music.bps.org.au](http://www.music.bps.org.au)**

## EXPLORER & CONCERT BANDS

The Explorer Band is aimed at students in Years 3&4 with no musical experience and is an ideal introduction to learning a musical instrument. After a year with Explorer Band, students will progress to the Concert Band.

See **[www.music.bps.org.au](http://www.music.bps.org.au)** for all information and fees.

## RECORDER ENSEMBLES

The BPS Recorder program offers 2 ensembles, the Bellbirds Ensemble for junior musicians in K-2 (including beginners) and the Festival Ensemble for experienced players in years 3-6. Contact [sue.thorv@gmail.com](mailto:sue.thorv@gmail.com) with any questions.

See **[www.music.bps.org.au](http://www.music.bps.org.au)** for all information and fees.

## STRING ENSEMBLE

The BPS String Ensemble is a group of enthusiastic young musicians who love playing and sharing music together. Students from K-6 who are learning or would like to learn violin, viola, cello or double bass are encouraged to join us. Contact [sue.thorv@gmail.com](mailto:sue.thorv@gmail.com) with any questions.

See **[www.music.bps.org.au](http://www.music.bps.org.au)** for all information and fees.

Email [music@bps.org.au](mailto:music@bps.org.au) with any questions

## Support BPS by:



BPS is a donation partner on the machine located in Berowra Heights

Collect eligible containers and donate your returns by selecting

'Berowra Public School'

All funds raised go towards the upkeep of the school veggie garden



Every time you buy a pair of shoes from Hornsby Athlete's Foot store - **\$5** will be donated back to **BPS**

This applies to the whole family across a fantastic range of school, sports, work and casual shoes



**The Athlete's Foot Hornsby**

Shop 1082, 236 Pacific Highway  
Hornsby, NSW, 2077



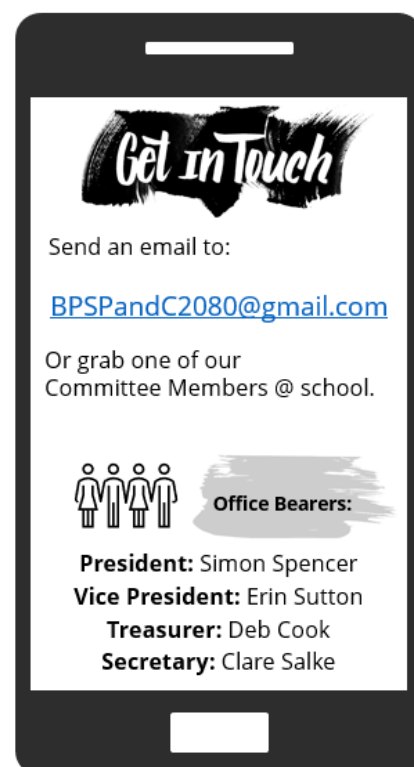
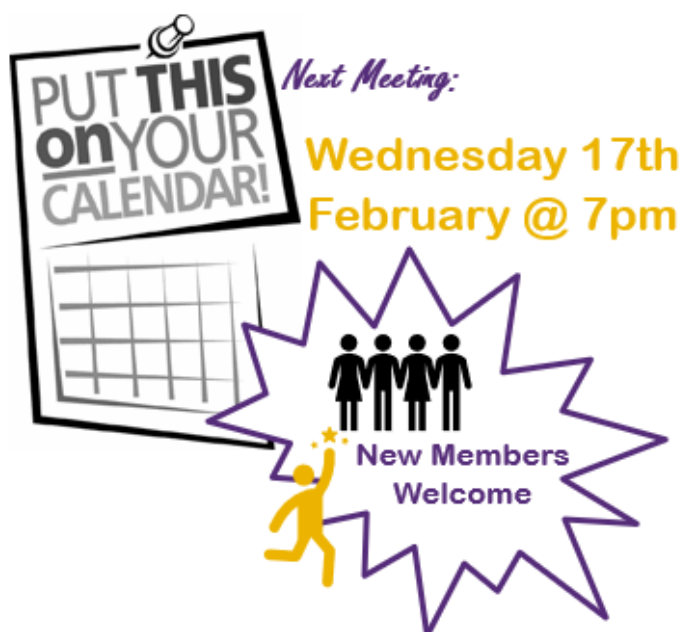
A school parents dream! Selling personalized labels, clothing and lunch boxes; giving a percentage of sales back to the school to help purchase additional resources  
[www.stuckonyou.com.au/affiliate/fundraiser/BPSS](http://www.stuckonyou.com.au/affiliate/fundraiser/BPSS)

Make sure when checking out that **BPSS** is in the Crew/Fundraising code box  
Your Purchase Supports

**Berowra Public School Support**

## About BPS P&C:

BPS P&C is made up of busy and committed parents who work with the school to provide opportunities to advance student's wellbeing and education. We meet on the 3<sup>rd</sup> Wednesday of each month at 7pm. All welcome!



BE AMBITIOUS



TAFE NSW

## BE PREPARED

WITH HORNSBY TAFE ESOL ENGLISH

COURSES **GENERAL AND ADVANCED ENGLISH COURSES –**  
**6 LEVELS** *Fee-free for Citizens and PRs*

**Semester 1 2021** - classes start from 1 February

*Classes back on-Campus !! COVID-19 safety measures in place*

*Classes fit with school hours*

*Come along with a group of friends !!*

Contact [esolhornsby@tafensw.edu.au](mailto:esolhornsby@tafensw.edu.au) to **make**  
**a course placement test appointment.** Next  
testing dates 30th Nov, 7th + 9th Dec. 2020