

The  
**CREST**

TERM 1 WEEK 3

**ISSUE 1**

FEBRUARY 8, 2023



# UPCOMING EVENTS



## SCHOOL

Monday FEB 13: Meet the parent



## SPORT

Friday FEB 17: HZSS starts



## P&C

Wednesday FEB 15: Meeting



## EXCURSION

Tuesday MAR 21: Stage 1 excursion to Gibberagong

# QUOTE OF THE DAY

*The greatest glory in living lies not in never falling, but in rising every time we fall.*

**Nelson Mandela**

# IN THIS ISSUE

**PAGE 3** [Principal's Report](#)

**PAGE 4** [Meet The Captains](#)

**PAGE 7** [Year 1 gallery](#)

**PAGE 12** [Noa's short story](#)

**PAGE 13** [Choir](#)

**PAGE 15** [Canteen menu](#)

**PAGE 20** [Dance](#)

**PAGE 20** [Library news](#)

# CONTACT US



Hillcrest Road, BEROWRA,  
NSW 2081



02 9456 1319



[berowra-p.school@det.nsw.edu.au](mailto:berowra-p.school@det.nsw.edu.au)

UNDER  
CONSTRUCTION

# QUICK LINKS

OUR  
WEBSITE



UNIFORM  
SHOP



BUS  
TIMETABLE



SECURITY  
HOTLINE



MAKE A  
PAYMENT



CANTEEN  
ONLINE



# Welcome Back!



**Vicky Wallace**  
PRINCIPAL

**D**ear Parents and Carers, welcome back to BPS for 2023. We are so proud of how settled all our classes are and how quickly the children are getting into new class routines.

### Recent upgrades

Finally, the temporary fencing has been removed from the playground and the field and new turf looks amazing.

During the holidays we have had the new asphalt laid between A and B Block all the way down to underneath the cola near the garden. This has not been finished as the final coat of textured paint, line marking, and beautification is still to be completed... but we are well on the way.

We have had a new roof installed on the student toilet block and some internal painting completed in some classrooms.

The relocation of the 2 classrooms to A block is nearly finished and the space looks amazing and fresh. The classes are already using these spaces, however we are still waiting on the interactive TVs, tote tray cupboard, teachers desks and a few finishing touches.

We are still currently sorting Administration D Block as we are still waiting on the remainder of the new furniture to arrive

We will have a tour of A and D block at the upcoming P&C meeting.

### Parent Information Sessions

We will be holding Parent Information Zoom Sessions in Week 4.

Parents will be requested to send in any questions they would like answered prior to the session. It will be a great opportunity to be introduced to the teachers on the stage and to clarify anything you are uncertain about. These sessions will be held face to face and Zoom links will be sent before the date for those who are unable to be there in person.

Please use the links below if you have any questions you would like answered on the night. All information from the night will be collated and shared.

### Kindergarten

<https://forms.gle/z8LhBJsgVW4q7vi99>

#### Stage 1 (Years 1 + 2)

<https://forms.gle/1L58gtcXu6AdwdNT6>

#### Stage 2 (Years 3 + 4)

<https://forms.gle/7zugULSupqT6Vne6A>

#### Stage 3 (Years 5 + 6)

<https://forms.gle/GDWjE9rtnmb5jCtT9>

### Save the date and time

Week 4 Monday 13 February

**ES1** – 5:00pm-5:30pm

**Stage 1** - 5:30pm-6:00pm

**Stage 2** - 6:00pm-6:30pm

**Stage 3** - 6:30pm-7:00pm

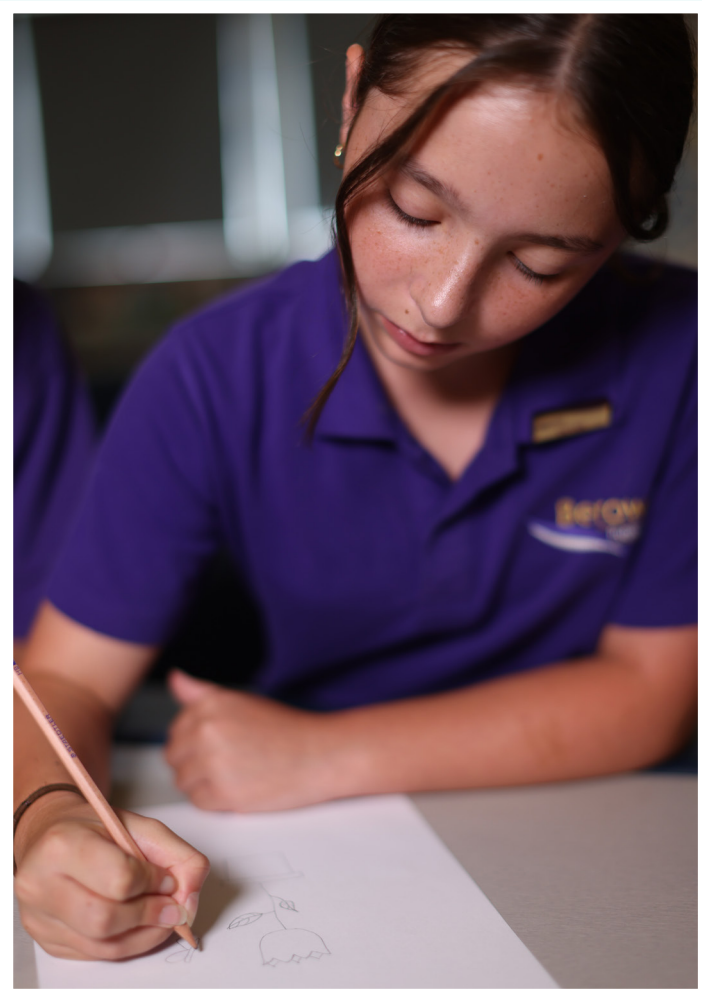


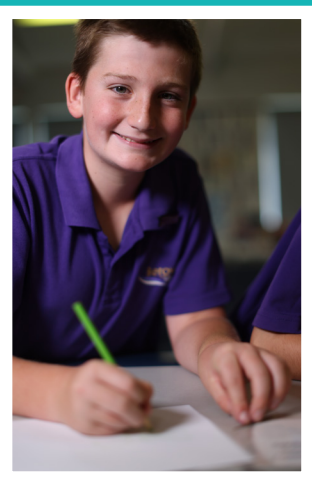
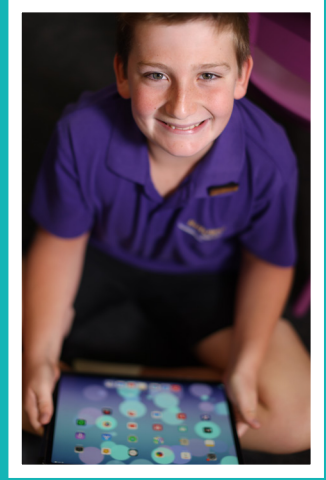
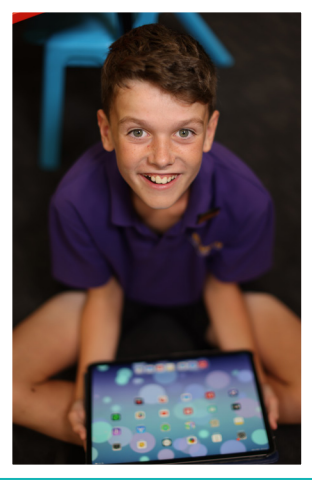
CONGRATULATIONS

# Meet Our Student Leaders

---





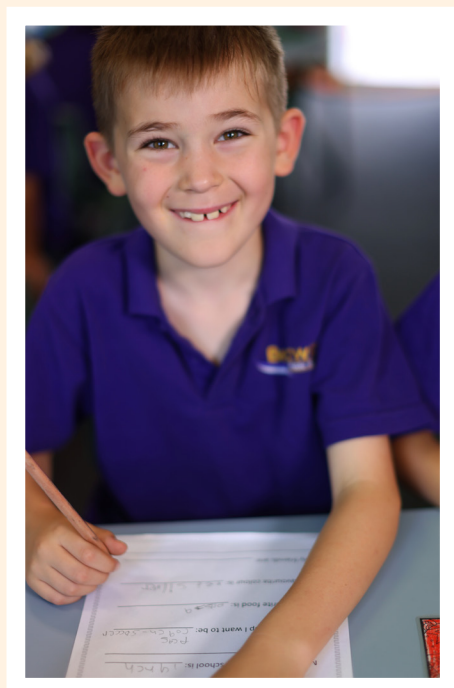
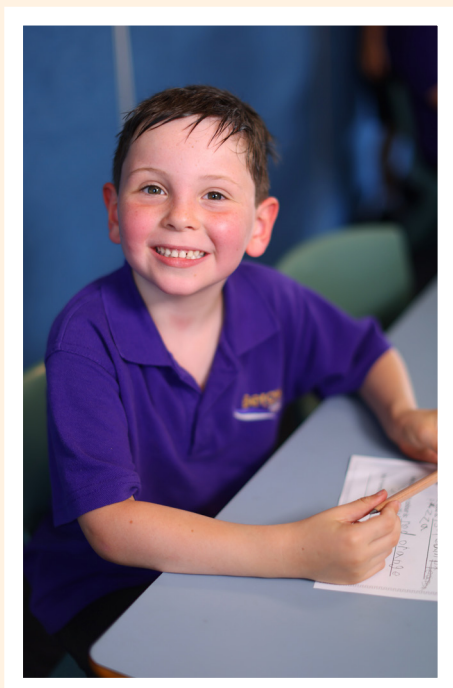




WELCOME TO YEAR 1

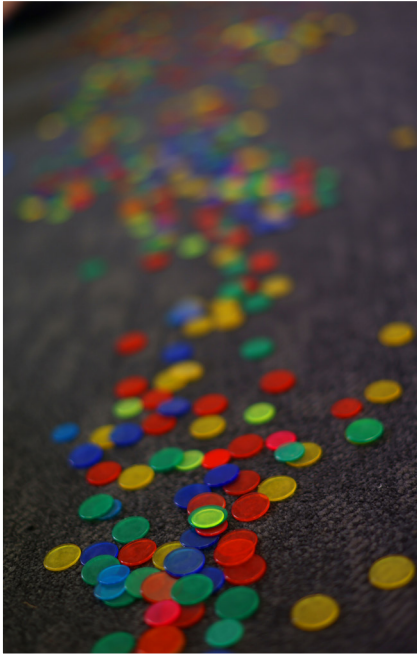
# Year 1

*This week we feature our incredible Year 1s.*













# The Alchemist's Letter

By Noa G (4/5A)

It was an old, battered cottage in the middle of the woods. It was abandoned for many years, but apart from a missing brick or cobweb here and there, it was still in good shape. When you first looked at the cottage, you'd think it was just an empty lifeless piece of junk. But inside, you would be amazed.

The small cottage contained a mysterious machine that would turn anything to gold. But it worked on memories. The more precious the memory, the better the machine was. There was a letter, sitting on a glass stand. It was an old piece of parchment with a lovely red sticker sealing it shut. But that was nothing compared to the stunning sight of the machine. As it worked, you would see all the memories of the maker's life. The way it worked, so graceful, like it all had a purpose, and that is all that it needed to know. As it rolled and clicked into position or lifted and dropped all at precisely the right time, you would see in stunned silence all of the important, precious memories that the greedy alchemist gave up for gold.

In one memory you saw a father with his son, playing and talking. In another, there was a boy sitting under the generous shade of a big oak tree, and the boy looked at the watch, before throwing it as far as the eye could see. In slow motion, the watch slowly disintegrated in midair, its parts that were left falling down, down into the machine for the next step in making it.



## Berowra Public School Choir

Berowra Public School is excited to have both Junior and Senior Choir back for 2023.

Senior Choir is for interested students in years 3-6 and will rehearse Thursday lunchtimes in Mrs Withford's (4/5A) classroom starting on Thursday 16<sup>th</sup> February.

Junior Choir is for interested students in years 1-2 and will rehearse Friday lunchtimes in Mrs Kempe's (1/2K) classroom starting on Friday 17<sup>th</sup> February.

If you love to sing you are welcome to join. No audition is needed. We would love to see you there. If you are not sure if this is for you, come and try for the first few weeks and see if you like it. The aim is to have fun singing! We look forward to seeing many "old" and "new" choir students in 2023.

Mrs Withford and Mrs Kempe





## **Hornsby Local AECG**

**Contact: Dave Lardner**

**President**

**0416 025 639**

**E: [hornsbyaecg@gmail.com](mailto:hornsbyaecg@gmail.com)**

**Subject: Meetings for 2023**

Dear Parent, Community Member, School Principal

The NSW Aboriginal Education Consultative Group Inc (AECG) is a community-based organisation made of volunteers who are involved in Local and Regional AECGs throughout NSW. The NSW AECG Inc is recognised as the principal source of advice on behalf of Aboriginal communities on issues relating to education and training.

Our local AECG however needs your support and attendance. We strongly believe that real change in Aboriginal education for our kids can only happen with your input.

We encourage you to pass on this information to any other staff members and Aboriginal families at your school/network who may be interested in attending.

All meetings will be 4pm - 5.30 pm at **ASQUITH PS** (3 Dudley St, Asquith) in the school library:

Term 1: Thurs 9<sup>th</sup> March - 4 to 5.30 pm

Term 2: Thurs 18 May - 4 to 5.30 pm

Term 3: Thurs 17 August - 4 to 5.30 pm

Term 4: Thurs 26 October - 4 to 5.30 pm - including AGM

Could you please ring either Dave Lardner on 0416 025 639 or email Lea-Anne Harlow (Secretary) at above and let us know your availability. Please check prior, Covid arrangements pending.

To make this local AECG a viable and operating unit, we need your support.

Yours in Aboriginal Education and Training

**President: Dave Lardner**

**Hornsby Local AECG – 2023**

## Canteen Summer Menu 2023

Available Wednesday, Thursday and Friday

Order online at:  
[www.flexischools.com.au](http://www.flexischools.com.au)  
or at the canteen



### MORNING TEA

Homemade Baked treat	1.00
Pizza Muffin (V)	1.00
Garlic bread	2.00
Jatz crackers with cheese	0.50
Fresh fruit	0.50

### CHIPS

Koala popcorn - plain	1.50
Grain waves - sour cream & chives	1.50
Red rock deli - plain	1.50

### SALAD

Rainbow salad bowl	3.00
Lettuce, cucumber, tomato, carrot	
- add pineapple or corn	0.50
- add ham, chicken or cheese	1.00
Crunchy veg sticks - cucumber and carrot	1.00

### FROZEN

Frozen seasonal fruit	0.50
Berri quelch fruit stick	0.50
TNT/ice mony	1.00
Twisted frozen yoghurt - chocolate/vanilla or watermelon/mango	2.50

### TOASTED SANDWICHES

• ALL TOASTIES MADE ON WHOLEMEAL BREAD

Cheese	3.00
Ham	3.00
Cheese & ham	3.50
Cheese & pineapple	3.50
Cheese & baked beans	3.50
Cheese & spaghetti	3.50
Cheese & tuna	4.00
Tuna	3.50
Ham, cheese & pineapple	4.00
Ham, cheese & tomato	4.00
Gluten free bread	1.00

### SANDWICHES - WHOLEMEAL BREAD

Vegemite	
Cheese	2.00
Ham	2.00
Chicken	3.00
Tuna	3.00
Salad	3.00
Egg	3.00
Egg, lettuce & mayo	3.00
Ham, cheese & tomato	3.00
Tuna, lettuce & mayo	3.50
	3.50
Extras - lettuce, cheese, tomato, grated carrot, beetroot or mayo	0.50
Gluten free bread	1.00
Wrap	0.50

### DRINKS

Juice - apple, orange or apple & blackcurrant	1.50
Water	1.00
Oak light fat flavoured milk - strawberry/chocolate	2.30
Chill J	2.30
Flavours: raspberry, grape, blackcurrant, apple coola, lemonade, orange & passionfruit	



## SPECIALS

Sushi	\$4.00
Wednesday, Thursday & Friday	
Tuna, avocado, chicken teriyaki, cucumber	
Salmon or cucumber and avocado	\$4.50
Bakers Delight Pizza	\$4.20
Thursday Only	
Margherita or Hawaiian	
Macaroni & Cheese (GF available)	\$4.00
Friday Only	

## HOT FOOD

Garlic bread	2.00
Corn cobette (large)	2.00
Nuggets (4)	3.50
Nuggets (4) GF	4.00
Snack pie	3.00
Hashbrown	1.00
Homemade pasta bolognaise	4.00
Homemade pasta bolognaise GF	4.00
Sausage roll	3.50
Spinach & ricotta roll	3.00
Travellers pie	4.50
Chicken burger with lettuce & mayo with the lot	4.50 5.50
Beef burger with cheese & tomato sauce with the lot	4.50 5.50
Chicken snack wrap chicken patty with lettuce & mayo on a tortilla	4.20
*Sauce – tomato or BBQ	0.30

## CANTEEN INFORMATION

### ABOUT US

Our canteen is operated by our Manager and is assisted by our volunteer parents and grandparents as part of Berowra Public School's active P&C.

### VOLUNTEERING WITH US

Our canteen is staffed by a group of wonderful volunteers who help us prepare healthy food and assist with serving at the canteen. If you would like to volunteer, please contact us. Most volunteers help once a month from 9.30 am – 2.30 pm.

### OPENING HOURS

We are open Wednesday, Thursday, and Friday for recess, lunch, and over-the-counter sales.

### EVERYDAY & OCCASIONAL FOOD OPTIONS

We are working towards the NSW Healthy School Canteen Strategy to provide a menu that's at least 3/4 everyday healthy options, and no more than 1/4 occasional food.

Go to [www.healthyschoolcanteen.nsw.gov.au](http://www.healthyschoolcanteen.nsw.gov.au) to find out more about these requirements. Please note prices and menu items may vary from time to time.

### ORDERING

Due to the current situation, orders will only be available via Flexischools. The service fee will be waived on all orders until further notice. To set up your account go to [www.flexischools.com.au](http://www.flexischools.com.au).

### FORGOTTEN LUNCH

If your child is without their lunch the office will call the parent and a forgot lunch note will be completed. The invoice will be sent home with the child. Please pay within 7 days.

### CONTACT US

Manager – Alison  
Ph: 9456 1319  
Email: [canteen@bps.org.au](mailto:canteen@bps.org.au)





## ***How to Use the BPS Canteen Guide***

Welcome to the BPS Canteen! We are open Wednesday, Thursday and Friday.

There are two ways to order lunch:

1. Via the FlexiSchool app prior to 9.20am
2. Ordering over the counter with cash prior to 9.20am

### **FlexiSchools App**

Most parents pre-order recess and lunch. The cut off for orders is 9.20am on the day.

#### **How to set up your FlexiSchools account**

1. Download the Flexischools App Note: for iPhone and iPad please select 'Allow' notifications.
  2. Login/Register
- Already a Flexischools user - Enter your details and login. To save your login details select 'remember me'.
  - New Flexischools user - Click 'Register', enter your email address and follow the instructions in the email to set up your account. Once your account is set up, add new student; search for their school, enter student details and select their class.
3. Add your School and Year Level/Class

Click on the search icon, enter your school name, select your school and year group, or groups relevant to you.

#### **How to Order**

1. Click the 'Order food' button located across the top of the app home screen and select your student.
2. Make your Selection - Select the items you wish to order.
3. Make Payment - Select your payment option and complete payment to place your order.

### **Ordering With Cash**

You and/or your child can bring money to the canteen window in the morning (8.50 to 9.20am) and order recess or lunch.

#### **Recess Orders**

Tell your child if you are ordering them canteen food for recess. They need to come up to the canteen window at the beginning of recess and tell us their name to collect their order.

#### **Lunch Orders**

Lunch orders will be dropped off at your child's classroom. The teacher will select two students to come pick up their class lunch tub at the beginning of lunch.

If you have ordered an ice block or frozen fruit then your child must keep their lunch bag and not throw it in the bin. We do not deliver ice blocks to the classroom. Your child needs to bring their lunch bag up to the canteen during the second half of lunch to collect the ice block you have ordered for them.

### **Birthday Buckets**

Birthday Buckets can be ordered in advance to help celebrate your child's birthday. In a birthday bucket is a Quelch Icy Stick for every student in your child's class as well as the teacher. We will ring the teacher in the morning to organise when the birthday bucket will get picked up for the class.

### **Buying Food at Recess and Lunch**

If your child has money they may buy food at recess or lunch. Children normally buy drinks, snacks and ice blocks. Ice blocks can only be purchased at lunch time during the second half of lunch. This is a school rule. There is sometimes a small amount of hot food available, normally Garlic Bread and Pizza Muffins, subject to availability.

If your child can't read or understand coins yet then the canteen manager and volunteers are very happy to help them with their purchase.

### **What if I forget?**

If you forget to pack food or order in advance you can call the school and they can connect you to the canteen.. We can arrange something for your child and you can make an IOU payment using FlexiSchools or you can bring cash the next day.

### **Volunteering in the Canteen**

We are always looking for canteen volunteers to help us. If you have any spare time give it a try. You can do a morning or afternoon shift on Wednesday, Thursday or Friday. This can be a one-off thing or a regular commitment.

New volunteers at the school need to complete a Declaration for Child-related Workers form, available from the canteen manager or the office, then bring the form and well as ID (license, medicare and bank card) to the office. This needs to be done in advance prior to volunteering at the school.

We're using SignUp to organise our canteen volunteers.

Here's how it works in 3 easy steps:

- 1) Click this link to see our SignUp on SignUp: <https://signup.com/go/okLpqYz>
- 2) Review the options listed and choose the spot(s) you like.
- 3) Sign up! It's Easy - you will NOT need to register an account or keep a password on SignUp.

Note: SignUp does not share your email address with anyone. If you prefer not to use your email address, please contact me and I can sign you up manually.

The BPS canteen is operated by the P&C. All money raised goes back to the school. If you would like to become involved with the P&C or have any questions contact [bpspandc2080@gmail.com](mailto:bpspandc2080@gmail.com).



### Why Multi-Age Classes Work:

- ❖ The number of students affects class composition – executive and teaching staff decide on the class structure which best suits the needs of the students and school.
- ❖ The new K-2 syllabus documents have established multi-age class scope and sequence and units of work to support teachers and students.
- ❖ No 'one' group is seen to be disadvantaged – all classes in each stage will be given the same opportunities, expectations and strategies.
- ❖ A 1997 report Multi-Age Classes in NSW found that these classes based on educational principles do not disadvantage students academically and actually benefit them socially and emotionally.
- ❖ Even within the same class, children will be at different levels. Teachers recognise this and differentiate the learning in all classes so that students are accessing the curriculum and learning at their level.
- ❖ Research has shown that children become more confident, can operate better as part of a group, are more assertive, become more independent learners and better problem-solvers. They also make friends outside of their standard age-groups, and develop tolerance & diversity.

## Library News

We are looking forward to seeing all the students back in the library and encouraging their love of reading. Borrowing has begun this week for years 1-6 and Kindergarten borrowing will begin next week. Student borrowing days for this term will be;

Monday - 1/2K, 3/4B, 3/4G, 5/6S

Tuesday - KF, K/1T, 1/2P, 3/4L

Thursday - 1/2L, 4/5A, 5/6M, 5/6P

**Please place a library bag in your child's bag ready for their library borrowing day.** Library bags are important for keeping our books in great condition and help us to reduce the number of damaged books.

## Dance News

Well done to all students who auditioned for this year's dance groups. You were all wonderful but unfortunately, we can only accept a limited number of students in each group. A list of successful students will be posted on the window outside the library at the end of this week and an email will be sent to parents in the coming week. Dance Group rehearsals will begin next week and times are as follows;

Girls Dance Group - Tuesday mornings from 8:15am - 9:15am in the hall starting on 14th February

Boys Dance Group - Thursday mornings from 8:15am - 9:20am in the hall starting on 16<sup>th</sup> February



# Berowra

Public School

## MEET THE TEACHERS 2023



MONDAY 13TH FEBRUARY



AN OPPORTUNITY FOR YOU TO MEET THE  
2023 TEACHERS AND FIND OUT  
INFORMATION ABOUT THE YEAR AHEAD.

**Early Stage 1:** 5pm - Kindergarten rooms

**Stage 1:** 5:30pm - 1/2P and 1/2L rooms

**Stage 2:** 6pm - The Library

**Stage 3:** 6:30pm - 5/6P room

A ZOOM LINK WILL ALSO BE SENT VIA EMAIL

