

The
CREST

TERM 1 WEEK 3

ISSUE 41

FEBRUARY 12, 2025



UPCOMING EVENTS



SCHOOL

Tuesday FEB 25: Meet the Teacher 4pm-6:30pm

Thursday FEB 27: Backflips Against Bullying

Wednesday MAR 12: NAPLAN starts



P&C

Wednesday FEB 19: P&C meeting

Thursday APR 4: P&C Disco



SPORT

Monday FEB 24: Swimming Carnival



EXCURSION

Wednesday APR 2: Leadership excursion

SCHOOL CALENDAR LINK

[LINK](#)

CONTACT US



Hillcrest Road, BEROWRA,
NSW 2081



02 9456 1319



berowra-p.school@det.nsw.edu.au



Security Hotline: 1300880021

QUOTE OF THE DAY

"I am still learning."

- Michelangelo

IN THIS ISSUE

- PAGE 4** Our New School Captains
- PAGE 8** Meet The Teacher
- PAGE 9** Drama
- PAGE 10** Garden Club
- PAGE 14** Media Team
- PAGE 16** Fundraising
- PAGE 18** Premiere's Reading Challenge 2025
- PAGE 24** Band

COVER: This year students in Year 5 have an opportunity to join the Media Team which meets every Wednesday at lunchtime.

QUICK LINKS

OUR WEBSITE



UNIFORM SHOP



THEIR CARE



FACEBOOK LINK



SCHOOL BYTES



CANTEEN ONLINE



PRINCIPAL'S REPORT

Welcome Back!



Vicky Wallace
PRINCIPAL

Welcome back to another exciting year at our school! I hope you all had a wonderful holiday, filled with joy, relaxation, and time spent with loved ones. It's always refreshing to take a break and recharge, and I trust that our families are returning well-rested and ready for the adventures that lie ahead.

I would like to extend a very warm welcome to our newest Kindergarten students and their families. We are thrilled to have you join our school community! To our returning families, it's lovely to see you back, and we look forward to another year of growth and discovery together.

As we embark on this new school year, I am excited about the opportunities we have to

work collaboratively with each of you. Our goal is to achieve positive learning outcomes for all our students, fostering a sense of belonging and nurturing a love of learning that will last a lifetime. Together, we can create an environment where every child feels valued and inspired to reach their full potential.

Here's to a fantastic year ahead, filled with support, encouragement, and shared successes!

MEET OUR NEW SCHOOL CAPTAINS FOR 2025



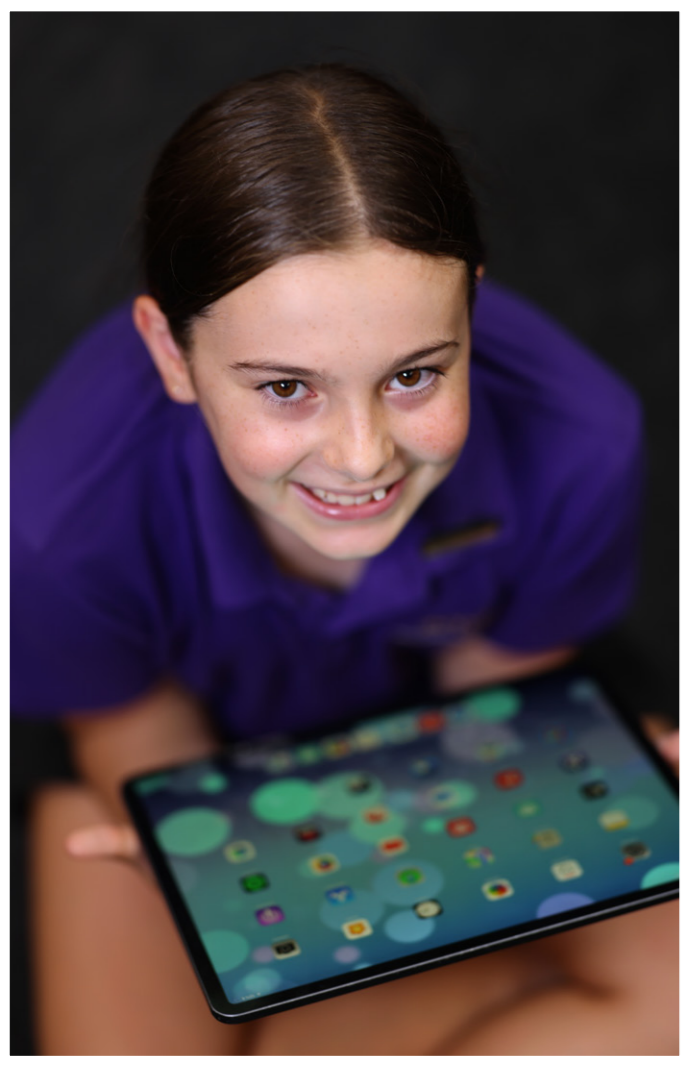
LIAM R.
[VICE CAPTAIN]

NOA G.
[CAPTAIN]

WILL S.
[CAPTAIN]

TIA V.
[VICE CAPTAIN]





Meet the Teacher 2025

Week 5 Tuesday 25 February

An opportunity for you to meet the 2025 teachers, find out information about the year ahead, have a BBQ and a chat

ESI @ 4:00pm-4:30pm (Kindergarten Room)

Stage 1 @ 4:40pm-5:10pm (5/6G Room)

Stage 2 @ 5:20pm-5:50pm (Library)

Stage 3 @ 6:00pm-6:30pm (5/6R Room)

BBQ will be available from 4:30pm-6:00pm

Staff supervision will be in the playground for school aged children from 4:30pm-6:30pm

A Google Doc will be sent home prior so you can add any questions you would like answered during the session

Respect in Dance and Drama

Self	<ul style="list-style-type: none"> • Try your best and get involved • Be responsible for your learning and your actions
Others	<ul style="list-style-type: none"> • Follow teacher's instructions carefully • Listen respectfully to others • Use kind words and keep your hands and feet to yourself
Community	<ul style="list-style-type: none"> • Watch performances with respect • Give your best effort when performing for others

Everyone - Everywhere - Everytime

Respect in Music & Art

Self	<ul style="list-style-type: none"> • Try your best and get involved • Be responsible for your learning and your actions
Others	<ul style="list-style-type: none"> • Follow teacher's instructions carefully • Listen respectfully to others • Use kind words and keep your hands and feet to yourself
Community	<ul style="list-style-type: none"> • Use equipment responsibly and safely • Leave the classroom the way you found it (clean and tidy)

Everyone - Everywhere - Everytime

GARDEN CLUB

PRODUCE FROM OUR GARDEN!

Wow! Imagine Mr Leary's surprise when he saw how big our pumpkins had grown during the Christmas holidays.

1/2L belong to the Garden Club helping mulch and pick out weeds, watering and fertilizing. In this picture we can see Daisy and Quinn are holding a gigantic butternut pumpkin and some lovely cherry tomatoes.



SENTRAL SMS ABSENCES 2025

SMS notifications for
absent students will begin
Monday 17th February.

YOU RECEIVE AN SMS

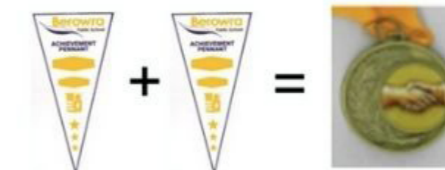
Respond to the message
for that date only.

YOUR CHILD WILL BE ABSENT FOR MORE THAN ONE DAY.

Use **Sentral Parent Portal** to
enter the range of dates. This is
the preferred and fastest option.
Email the school absences as the
last option.

REMINDER: SAVE YOUR CERTIFICATES

Berowra Public School Award Flowchart



TWO Pennants equals ONE Medal



THREE Honour Certificates equals ONE Pennant



FOUR Merit Certificates equals ONE Honour Certificate

Hand your certificates into the office
when you have earned an Honour
Certificate, Pennant or Medal.



BEROWRA PUBLIC SCHOOL
MEDIA TEAM

We are currently forming a new Media Team for 2025. Everyone in Year 5 is eligible to join. The Media Team meets every Wednesday at lunch. Together we document the life of our school through photography and video and celebrate our school's achievements

COMMITMENT

The Media Team will run for the whole year. We meet at lunchtime on Wednesdays every week and you will need to attend every meeting if possible. At major events such as the sports carnivals you will be asked to capture photos and video footage for our website and newsletter.

PRODUCTION VALUES

You will learn how to create high quality video projects and productions. This means using professional lighting and microphones to make your video projects look and sound professional.

TV NEWS PACKAGE

You will learn how to design and edit a complete news

package using iMovie and your iPads following a template. You will also have a chance to document how you learn in class and make videos about important issues you feel strongly about.

BADGE

All Media Team members will receive an official BPS Media Team badge that you will wear with pride.

PBL updates

Membership of the Media Team is an important leadership role. The school is entrusting in you to show our school in a positive light. One very important responsibility of the Media Team is to create videos to change or reinforce positive attitudes and behaviour through PBL videos on various topics.

“ Let their voices be heard! ”



BEROWRA PUBLIC SCHOOL
MEDIA TEAM



AUDITION

Year 5 students who are interested in joining must submit an **audition video**.

TASK: Media Team audition video

Students must make a short video. There are 3 options.

1. Prepare a short video presentation on why you should be selected: what special skills and qualities do you have?

OR

2. Prepare a video demonstrating your camera/editing/interviewing/writing/research skills on a topic of your choice.

OR

3. "The Day that Changed My Life". Make a dramatic video about a day you'll never forget.

Videos should run for no more than 30-60 seconds. Students must prepare this video presentation in their own time, not class time.

DATE DUE: Wednesday 16 March.

Please bring your video to school on a thumb drive (clearly labeled with your name and class) and hand it to your teacher or Mr Rutherford in the library.





FUNDRAISING

LEMONADE ANYONE?

What's more refreshing than a nice cup of lemonade on a hot summer's day? Which is why Mika, Alicia, Maria, Emily and Elodie decided to raise money for Berowra Public School with a lemonade stand. We ended up raising \$50 for our school. All the money will be sent to student parliament to improve our school.



CHESS!!

Learn to be a chess champion! Coaching for students at Berowra Public School is held on Tuesdays from 11:20am to 12:10pm, starting on 11 February 2025.

Learning and playing chess helps children develop their logical thinking and problem solving skills, improves their concentration and focus, while also being a great source of enjoyment. Activities include group lessons on a demonstration chess board or interactive whiteboard, puzzle solving and fun practice games.

Students earn merit awards by making checkmates, or by displaying skills and positive qualities, which all good chess players strive to develop.

Each student in the Chess program will also receive access to Chess Squad <https://www.chesssquad.com/> which is an online teaching/playing platform.

If your child is interested in taking part in the class, please email office.sydneyacademy@gmail.com for an enrolment form. For all enquiries, please contact Sydney Academy of Chess on (02) 9745 1170.



Artwork by Matt Ottley

NSW Department of Education

2025 NSW Premier's Reading Challenge

Start reading now!

www.premiersreadingchallenge.nsw.edu.au

Digital Partner



Supporter



**Key dates
for students
in K-10:**
Challenge opens
Monday 24 February
Challenge closes
for student entries
Friday 22 August

SCHOOL UNIFORM



We would like to remind families of the correct school uniform for all students. This uniform was designed by Berowra Public School students, promotes a sense of belonging and creates a positive identify for the school community.

Girls Summer Uniform

Purple polo shirt with school logo
Completely black Skort/shorts (no logos)
White socks that are below mid calf
Completely black school shoes
Black polo fleece jacket
Wide brimmed school hat

Girls Winter Uniform

Purple polo shirt with school logo
Completely black Skorts, shorts, jazz pants or trousers (no logos)
White or black socks
Completely black school shoes
Black polo fleece jacket
Wide brimmed school hat

Boys Summer Uniform

Purple polo shirt with school logo
Completely black shorts (no logos)
White socks that are below mid calf
Completely black school shoes
Black polo fleece jacket
Wide brimmed school hat

Boys Winter Uniform

Purple polo shirt with school logo
Completely black Shorts or trousers (no logos)
White or black socks
Completely black school shoes
Black polo fleece jacket
Wide brimmed school hat

Sports Uniform

House colour polo shirt
Completely black shorts or skorts (no logos)
White socks that are below mid-calf and track shoes
Wide brimmed school hat



Logos - School logo only on clothing, socks and hats, no other logos should be seen.

Shorts – Shorts must be of an appropriate length. Bike shorts and short shorts are not appropriate for school.

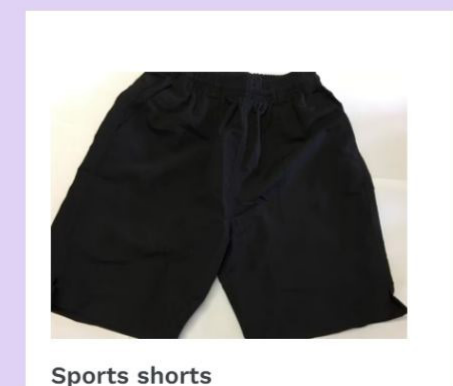
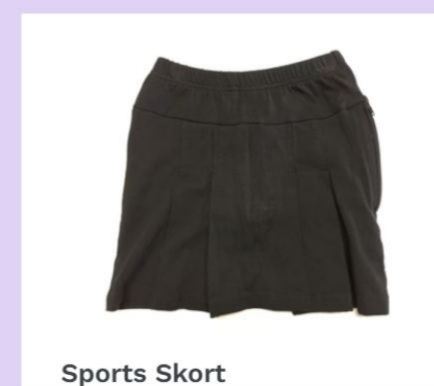
Tights and Leggings – Black tights and/or leggings are only to be worn under school uniform.

Jewellery – Bracelets, necklaces, rings, and earrings (other than studs or small sleepers) are not permitted to be worn at school. Watches can be worn and in the case of Smart Watches, must be on 'school mode', as per the BPS mobile phone procedure.

Make-Up – Make-up is not permitted to be worn at school unless necessary for school performances.

Accessories – Nail polish or false nails are not permitted to be worn at school. Hair that touches the shoulder must be pulled back. Small hair accessories are permitted in the school colours of purple, yellow and black.

Please label all student belongings clearly and check the labels regularly.



Uniform shop link

<https://uniformshop.bps.org.au/>

Why Multi-Age Classes Work:

- ❖ The number of students affects class composition – executive and teaching staff decide on the class structure which best suits the needs of the students and school.
- ❖ The new K-6 syllabus documents have established multi-age class scope and sequence and units of work to support teachers and students.
- ❖ No ‘one’ group is seen to be disadvantaged – all classes in each stage will be given the same opportunities, expectations and strategies.
- ❖ A 1997 report Multi-Age Classes in NSW found that these classes based on educational principles do not disadvantage students academically and actually benefit them socially and emotionally.
- ❖ Even within the same class, children will be at different levels. Teachers recognise this and differentiate the learning in all classes so that students are accessing the curriculum and learning at their level.
- ❖ Research has shown that children become more confident, can operate better as part of a group, are more assertive, become more independent learners and better problem-solvers. They also make friends outside of their standard age-groups, and develop tolerance & diversity.

NSW Department of Education

Why attendance matters

When your child misses school they miss important opportunities to...



Learn

education.nsw.gov.au



Make friends



Build skills through fun



This fortnight's Smiling Mind focus is Awareness

At Home Activities

K-2

Brush your teeth mindfully

This is a great way to pay attention to all the feelings and sensations you experience and to train your brain to focus. Every time you brush your teeth, pay attention to the feeling of the brush against your teeth, the sensations in your mouth and movement of the brush. What can you notice?

Stage 2

Balancing

Did you know that it takes a lot of awareness to balance? Find a small object that fits in your hand, and then focus your attention on trying to balance it on the back of your hand, then, move the object so that you are balancing it on only three fingers, then two, and then only one! Take a moment to write down what you noticed when you balanced the object on different parts of your hand.

Stage 3

Mind Body Connection

‘Automatic pilot’ happens to everyone - sometimes our mind just wanders off. Take a moment to get comfortable with a pencil or pen and some paper. Think about a time when you noticed you were on ‘automatic pilot’ and reflect on how you were able to use what we learnt in class to be more mindful. Describe this experience by writing it down.

Smiling Mind website

<https://www.smilingmind.com.au>

Berowra RSL Sub-branch's

YOUTH CLUB BAND

A local community band
for players 10-24 years

Playing at ANZAC Day & other community events.

Develop performance skills, build friendships & have fun.

Join us!
Rehearsals
Wednesday 6-7pm
Berowra Heights



Contact us to find out more
and come for a free trial

rslyouthclubband@gmail.com



WEDNESDAY
26 FEBRUARY 2025

OPEN NIGHT

5.30PM TO 8.30PM



OPPORTUNITIES TO MEET WITH OUR
TEACHERS, SEE EXCITING FACULTY DISPLAYS,
JOIN GUIDED TOURS AND ATTEND A
Q & A SESSION

Please note: Out of Area Enrolments are subject to NSW Department of Education Out of Area Enrolment Policy